

Comprehensive Outdoor Recreation Plan 2023-2028

City of Menomonie

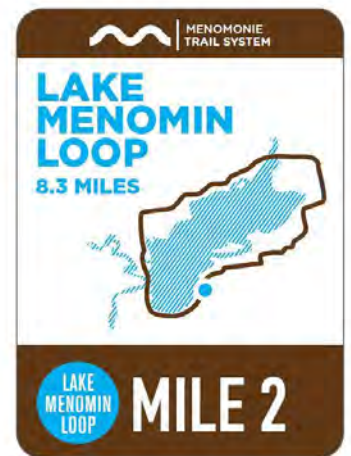


Table of Contents

Vision Statement

Chapter 1 – Introduction.....	1
Background	1
Summary of Past Plans.....	1
Planning Process	2
Adopting and Amending the Plan	3
Types of Recreational Activities	3
Benefits of Planning for Parks and Amenities	4
Recreation Department Philosophy.....	5
Terms	5
Comprehensive Plan Recommendations	6
CORP Goals and Objectives	7
 Chapter 2 - Community Profile.....	 9
Introduction	9
Physical Setting and General Information	9
Social Characteristics	11
 Chapter 3 – Facility Needs and Demand Assessment	 13
National Recreation and Parks Association Standards	13
Green Space Comparison.....	15
Menomonie Parks by Classification	15
Parks and Open Space Guidelines.....	19
Park Service Areas.....	20
Public Input	23
Regional and State Trends	23
 Chapter 4 – Parks and Recreation Facilities	 25
Park and Trail Inventory Classification.....	25
Bicycle Friendly Community	25
Parks and Recreational Inventory.....	30
Park Amenities Summary.....	31
Participation in Recreation Programs.....	33
 Chapter 5 – Other Park Related Improvements	 36
Standardizing Park Amenities	36
Park Signs	36
Park Shelters	36
Dedication of Trees and Benches	37
Park Maintenance and Landscaping	37
Naming of Parks and Recreational Areas.....	37

Acknowledgements

Recreation Advisory Board

Carla Kieffer
Sherry Gibbs
Vacant, Council
Josh Risler
Jody Pabich
Jen Harris
Rory Feddersen
Linda Bark

Plan Commission

Dennis Kropp
Steve Cook
Richard Martinson
Paul Peltier
David Williams
Leland A. Schwebs
Chad Schlough

Common Council

Randy Knaack, Mayor
Lucas Chase, Ward 1
Penny Burstad, Ward 2
Eric Sutherland, Ward 3
Gretchen Yonko, Ward 4
Kelly McCullough, Ward 5
Leland A. Schwebs, Ward 6
Vacant, Ward 7
Mary Solberg, Ward 8
Chad Schlough, Ward 9
Ryland J. Erdman, Ward 10
Randy Sommerfeld, Ward 11

Chapter 6 - Funding	40
Funding Sources.....	40

Chapter 7 - Plan Implementation	45
Sign Standardization	45
General Improvements for All Parks.....	45
Natural Resources Available for Outdoor Recreation.....	46
Priorities.....	46
Ongoing Plan Recommendations.....	52
Plan Implementation	53
Annual Review of Plan	53

Maps

Map 3-1: Park Classification and Service Areas	22
Map 4-1: Park Ownership and Locations.....	28
Map 4-2: Existing and Proposed Bike Trails	29
Map 7-1: Wakanda Park Improvements.....	51

Tables

Table 2-1: Historical Population: City of Menomonie.....	11
Table 2-2: Projected Population: City of Menomonie	11
Table 2-3: Comparative Median Age	12
Table 3-1: Parks and Open Space Classifications	14
Table 3-2: Trail Classifications.....	15
Table 3-3: Green Space of Other Regional Communities	15
Table 3-4: Park Space Guidelines in the City of Menomonie.....	19
Table 3-5: Recommended Park Acreage per 1,000 People	20
Table 3-6: Recommended Service Area.....	20
Table 4-1: Summary Inventory of Existing Public Park System.....	26
Table 4-2: Park Inventory Summary	31
Table 4-3: Summer Program Attendance	33
Table 4-4: Fall Program Attendance	34
Table 4-5: Winter Program Attendance.....	35
Table 7-1: Natural Resources Available for Outdoor Recreation.....	46
Table 7-2: Short-Term Priorities	47
Table 7-3: Mid-Term Priorities.....	48
Table 7-4: Long-Term Priorities	49

Figures

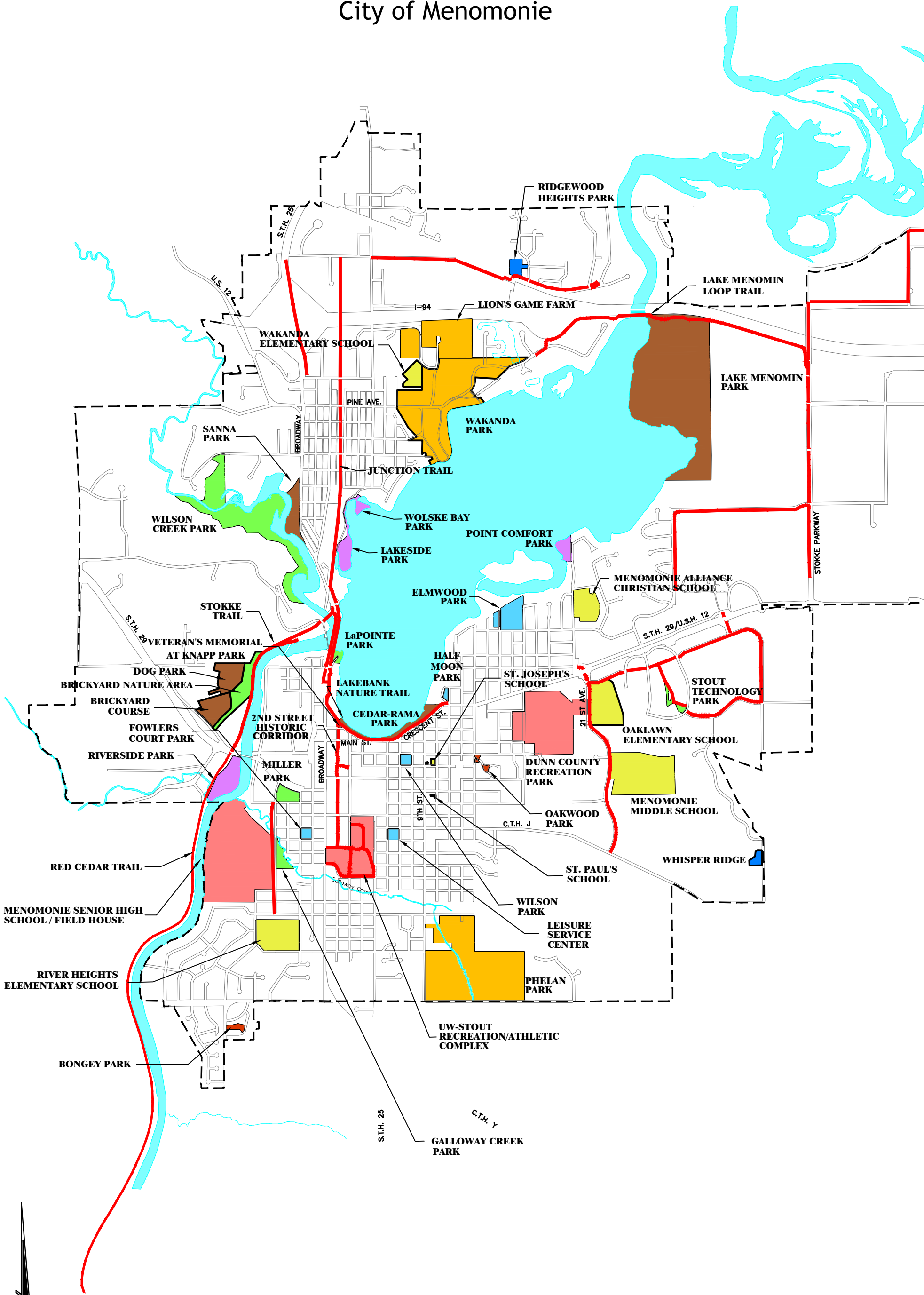
Figure 2-1: Menomonie Area.....	10
Figure 2-2: Population Pyramid: City of Menomonie	12
Figure 7-1: Natural Resources Available for Outdoor Recreation	46

Appendices	54
-------------------------	-----------

Appendix A: Public Facility Inventory
Appendix B: Survey Results Summary
Appendix C: Resolution

PARK MAP

City of Menomonie



SCALE:
0 600' 1200' 2400'



Chapter 1

Introduction

Background

The City of Menomonie has a long history of providing exceptional parks and recreation services for its residents and residents throughout the area. Public parks and recreational facilities are major assets in a community. They are looked at as a primary quality of life component when someone considers moving to or visiting an area. In 2002, the City received national accreditation from the Commission for Accreditation of Park and Recreation Agencies (CAPRA) which is sanctioned by the National Recreation and Park Association.

The Menomonie Comprehensive Outdoor Recreation Plan (CORP) examines the public park land in Menomonie. Approximately 40 acres of private park land also contributes to the ambiance of the community. This includes Menomonie Country Club Golf Course and Moose Lodge Ball Diamond.

The intent of the plan is to evaluate the current facilities, set goals, objectives, and priorities for future improvements, and to continue the process to design a park system which functions as a unit to serve the community. A well-planned park system serves the community at three separate levels:

1. Geographic Area: Parks should be accessible to various neighborhoods in a community.
2. Age Group: The outdoor recreation needs of children, young adults, mature adults, and the elderly vary greatly. Considerations must be made for adequate facilities such as parking and access.
3. Activity Level: A good park system is designed to include areas for organized activities with spectators, improvised sandlot games, and natural and scenic open space.

Meeting the geographic, age group, and activity level needs of the community requires an on-going effort on behalf of the City Council and Parks and Recreation Department.

Summary of Past Plans

Adopted by the City of Menomonie, the City of Menomonie Comprehensive Outdoor Recreation Plan 2023-2028 is a guide for park land acquisition and development in the community with the goal of maintaining the high standards already in place. This plan updates the 1995-2001, 2001-2005, 2007-2012, 2013-2018 Plans and 2021 Amendment. Since 2007, the goals of the plans have been focused on the following: providing quality accessible park facilities and varied recreational opportunities to meet the needs of Menomonie residents now and into the future; adding a provision for non-resident use of city recreation programs; and preserving and protecting Menomonie's open space and water resources. The overall layouts

and organization of the past plans have been similar. They've included background and setting information, inventory and classification of the parks and recreation facilities, mapping of service areas, and prioritized recommendations.

Planning Process

Population and development trends show there is increasing pressure on the local natural resources. The park system must be evaluated regularly to continue to protect the natural resources and serve the needs of the community. The Comprehensive Outdoor Recreation Planning process is outlined below:

1. Inventory Park System
2. Evaluate Park System
3. Analyze Supply and Demand of Park Space and Amenities
4. Establish Goals and Objectives
5. Develop Prioritized Recommendations
6. Implement Plan

Public participation in the planning process is essential to designing a good park system. The needs of the general population must be served as well as the needs for people with disabilities, elderly, and minority populations. The City's Recreation Advisory Board has provided guidance throughout the planning process. Additionally, an online community survey was available from July 8 – July 31, 2022, to gather public input on the condition of the park and recreation facilities and to identify needs and desires for future improvements. The survey will be discussed in more detail under the Public Input section in Chapter 3 of this plan.

The City Council and the Recreation Department are responsible for Comprehensive Outdoor Recreation Planning in Menomonie. This plan was developed in meetings with City staff, Recreation Advisory Board, Plan Commission, and Recreation Department.

The CORP was discussed and developed through a series of public meetings. The list below identifies the public meetings and meeting dates where this plan was developed:

Recreation Advisory Board Meeting

The Recreation Advisory Board reviewed the draft survey at their June 6, 2022, meeting. At the September 14, 2022, meeting, the Board reviewed the survey results, discussed park amenities, and priorities. The Board reviewed the full draft of the CORP at their January 9, 2023, meeting and wanted to have some more time to review the plan and asked to bring it back for review and consideration. The Board recommended approval of the plan on February 13, 2023.

Plan Commission

The Plan Commission reviewed the draft plan at their February 27, 2023, meeting, asking for additional time for review. The Plan Commission had a few minor comments, but ultimately recommended approval of the CORP at their March 27, 2023, meeting.

Common Council

The Common Council reviewed and adopted the plan at their meeting on April 17, 2023.

Adopting and Amending the Plan

Amending the plan will follow the same procedures as adopting the plan. The Recreation Advisory Board will review the plan and/or any proposed amendments to the plan. They shall then pass a motion recommending approval of the plan to the Common Council. The plan becomes officially adopted upon approval of a resolution by the Common Council. The Common Council, at its discretion, may elect to hold a public hearing before adoption of the plan or an amendment. They may also establish planning procedures such as public engagement efforts or public hearings. Such efforts should be documented and included in future plans.

The Comprehensive Outdoor Recreation Plan was adopted by the City Council with preparation assistance from the City Administrator, Public Works Director, and Recreation Director.

Types of Recreational Activities

It is important to keep in mind that people have different parks and recreation needs based on their age, physical ability, and activity they want to take part in. Recreational activities are classified as active or passive.

Active Recreation

Active recreation refers to activities for individuals or teams that require the use of special facilities such as:

- Basketball Courts
- Baseball Diamonds
- Soccer Fields
- Golf Courses
- Hockey Rinks
- Tennis Courts
- Skateboard Parks
- Playground Equipment
- Pickleball

Passive Recreation

Passive recreation refers to activities that do not typically require developed facilities but place a priority on facilities or amenities that support the access to and enjoyment of nature. These facilities and amenities include:

- Walking, hiking, and bicycling trails
- Boat ramps or canoe/kayak launch areas
- Observation decks

- Docks
- Beaches
- Benches
- Pavilions
- Picnic tables
- Restrooms
- Drinking fountains
- Bicycle racks

By providing a variety of recreational activities to the community, the City of Menomonie ensures that its parks are inclusive and accessible for users. At the same time, communities must identify what parks, recreational facilities or natural features are unique to them and can be used and promoted in a positive way.

Benefits of Planning for Parks and Amenities

Parks and recreation are key for providing a quality of life to Menomonie residents and visitors. The specific benefits that parks and recreation programs bring to a community cover a wide spectrum and are important when promoting the city as a great place to live and visit.

Environmental Benefits

- Natural areas provide wildlife habitat, improve surface water quality, provide stormwater management, improve groundwater quality, and improve air quality.
- Trees and other vegetation provide shade, which reduces the urban heat island effect.
- Children and adults can experience and connect with nature and understand the value of protecting the environment.
- Utilization of trails for transportation can reduce emissions.

Health Benefits

- Parks, trails, and recreation programs allow opportunities for people to engage in physical activity at a level that fits their needs and abilities.
- Children who are active at an early age tend to stay active as adults.
- Exposure to nature can reduce stress and increase happiness.

Social Benefits

- Parks and recreation programs are inclusive with regards to income, race, and physical abilities.
- Parks provide spaces for social interaction with friends or meeting new people. These spaces provide places for concerts in the park, neighborhood picnics, and farmers markets that bring people outdoors.
- Parks can create a sense of pride and ownership in the community.

Economic Benefits

- Quality parks can influence a person's or business' decision to stay in or move to your community.
- Property values tend to increase in relation to the proximity to parks.
- Parks and recreation programs can generate income for local businesses when park related events encourage people to stay overnight, go out to eat, rent bicycles or kayaks, or stop at a convenience store.

Recreation Department Philosophy

The mission of the Menomonie Recreation Department is to be a leading provider or facilitator of high-quality recreation services, programs and facilities that will improve the quality of life for the citizens of Menomonie.

Terms

Below are terms used to describe programs, facilities, and recommended actions proposed in the plan.

- CORP: the Comprehensive Outdoor Recreation Plan that meets the state grant requirements for grant eligibility.
- Goals: general targets to be achieved.
- Objectives: specific targets that have stated means for their attainment.
- Policies/Priorities: guides to be used to attain goals and objectives. Policies may be developed and changed as needed.
- Standards: yardsticks established by consensus or scientific authority as a test of quality, dimension, and achievement.
- Mini-Parks: parks that include a playlot or playground that typically serve a concentrated population or specific age group or function within a neighborhood but can serve persons of all ages located in the immediate area. They typically contain children's playground equipment and passive amenities such as benches and shelters.
- Neighborhood Parks: parks that are the foundation of the park system and serve as the recreational and social focus of the neighborhood. These parks serve residents in a variety of age groups. The park should be easily accessible, and access should be uninterrupted by major roads or other barriers. Parking may be necessary. It is considered an extension of neighborhood residents' "out-of-yard" and outdoor use area.
- Community Parks: parks that are diverse in nature and serve a broader purpose than the neighborhood or mini parks. They are larger than neighborhood parks and are intended to serve a larger area. Community parks usually have both day and evening activities. Community parks include a mix of active and passive activities and attract users of all ages.
- School Parks and Facilities: facilities that can fulfill the space requirements for other classes of parks such as neighborhood, community, sports complex, and special use parks. Access to these facilities may be limited during school hours.

- **Capital Improvement Plan:** a plan or program that identifies future park needs, cost estimates, implementation schedule, and potential funding sources that helps staff and elected officials to prioritize park and recreation projects.

Comprehensive Plan Recommendations

The general guide for future growth and development in a community are often addressed in a community's comprehensive plan. Whenever developing a new plan or updating an existing plan, it's important to review the recommendations in the comprehensive plan. The City of Menomonie 2016-2036 Comprehensive Plan includes the goals, objectives, programs, policies, and actions from the Community Facilities chapter in the plan. Just about all of them relate to the parks and recreation facilities in Menomonie in some fashion.

Chapter 7: Community Facilities Goals, Objectives, Programs, Policies, and Actions

Goal 1: Support planning efforts that examine the short term and long-term needs of City provided services and facilities.

Objectives

1. Maintain the high-quality services and facilities currently provided to City and area residents.
2. Examine ways to reduce long-term costs associated with providing services and facilities to City and area residents.
3. Anticipate the future needs of services and facilities to serve City and area residents.

Programs, Policies, and Actions

1. Continue to update the City's Capital Improvements Plan to prioritize and budget facility and infrastructure needs.
2. Conduct needs assessments or feasibility studies for City Departments that have identified substantial future staff and/or space needs.
3. Continue to update the City's Parks and Recreation Plan that inventories the parks inside the City's boundary, evaluates park and recreational needs, and prioritizes future projects.
4. Design new City facilities that will allow for future and cost-effective expansion when additional space is needed.
5. Identify parcels of land in or adjacent to the city that would be suitable for new or expanded services and facilities.
6. Evaluate opportunities to work with other entities to provide services or facilities for City and area residents (ex: Working with UW-Stout and the Menomonie Area School District to provide recreational facilities).
7. Offset the cost of new or expanded facilities by identifying grants and other funding mechanisms.

Goal 2: Locate new or expanded services and facilities for the City or other entities in areas that are accessible to the public.

Objective

1. Ensure that City and other services and facilities are easily accessible.

Programs, Policies, and Actions

1. Evaluate access to safe vehicle, transit, bicycle, and pedestrian infrastructure when evaluating the location for a new or expanded facility.
2. Locate new facilities in areas that support compact and orderly growth or downtown redevelopment.
3. Work with groups to help them find the best locations for new facilities.
4. Review the future land use chapter when evaluating locations for new facilities.

Goal 3: Provide quality and efficient facilities to the greatest extent possible.

Objective

1. Construct facilities that present a positive image of the community and set standards for new facilities by other entities.

Programs, Policies, and Actions

1. Explore options to reduce energy consumption in existing or new services and facilities.
2. Evaluate access to vehicle, transit, bicycle, and pedestrian infrastructure when designing new or expanded facilities.
3. Incorporate quality design, to the greatest extent possible that complements surrounding design when appropriate.
4. Create a unique identity for the City of Menomonie.

CORP Goals and Objectives

The function of all plans, whether in our personal lives or in our community, is to identify goals and achieve measurable objectives. Goals are statements of desired outcomes or achievements. They are general in nature. Objectives are more specific and identify measurable outcomes.

As a community's desires and needs change, so too must its goals and objectives. The following goals and objectives represent the ends to which the priorities and recommendations in this plan are directed. These goals and objectives will provide a sound basis for future planning decisions in the communities regarding parks and recreation.

The Menomonie Comprehensive Outdoor Recreation Plan 2023-2028 is designed to provide an achievable program for meeting outdoor recreation needs in Menomonie. This program consists of goals, objectives, policies/recommendations, and standards. Implementation action and priorities will be included in Chapter 7. The overall goals and objectives of the Comprehensive Outdoor Recreation Plan are listed below.

Goal 1: Provide quality accessible park facilities for people with disabilities and varied recreational opportunities to meet the needs of Menomonie residents now and in the future.

Objectives:

1. Improve existing park facilities as necessary.
2. Acquire land in fee or by easements for needed parks.
3. Coordinate public parks and recreation areas with other land uses.

4. Cooperate with other local units of government and the state and federal governments in Comprehensive Outdoor Recreation Planning.
5. Formulate an action plan to meet the identified park needs.
6. Perform periodic reviews for improvement of Menomonie's recreation programs, goals, objectives, and policies.
7. Develop a coordinated system of parks.
8. Maintain the quality of recreational facilities.
9. Coordinate Menomonie's recreation program with the programs of other levels of government and private enterprise.
10. Encourage quality development of privately owned recreation facilities.
11. Provide a variety of recreation opportunities for the disadvantaged, young, old and people with disabilities.
12. Assure that new subdivisions consider parks and recreation in their plans.
13. Pursue federal and state grant programs for land acquisition, park development, and infrastructure maintenance.
14. Facilitate various activities in community parks.
15. Maintain existing fencing, picnic shelters, and restrooms at park facilities.
16. Protect and improve the quality of life for City and area residents.

Goal 2: Add a provision for non-resident use of city recreation programs.

Objectives:

1. Include a provision for a recreational and tourism program that is designed to enhance the City's economy.
2. Continue to evaluate the impact of non-resident visitors and tourists on the local economy and recreation facility use.

Goal 3: Preserve and protect Menomonie's open space and water resources.

Objectives:

1. Identify and preserve sites having scientific, historic, scenic, or archaeological significance.
2. Protect resources by acquisition, easements, zoning, and legislation.
3. Combine resource protection with park and recreation development.
4. Protect Menomonie's open space and water resources from visual blight and degradation.

Chapter 2

Community Profile

Introduction

The City of Menomonie is a growing community located on the Red Cedar River and surrounds Lake Menomin. These water resources are highly valued and protected and make the city an attractive place to live. It is a beautiful, friendly community located in the central part of Dunn County, Wisconsin. The surrounding areas have an abundance of wildlife, clean air, and a relaxed pace of life that residents and visitors enjoy. The City of Menomonie is also home to campuses for the University of Wisconsin Stout and Chippewa Valley Technical College.

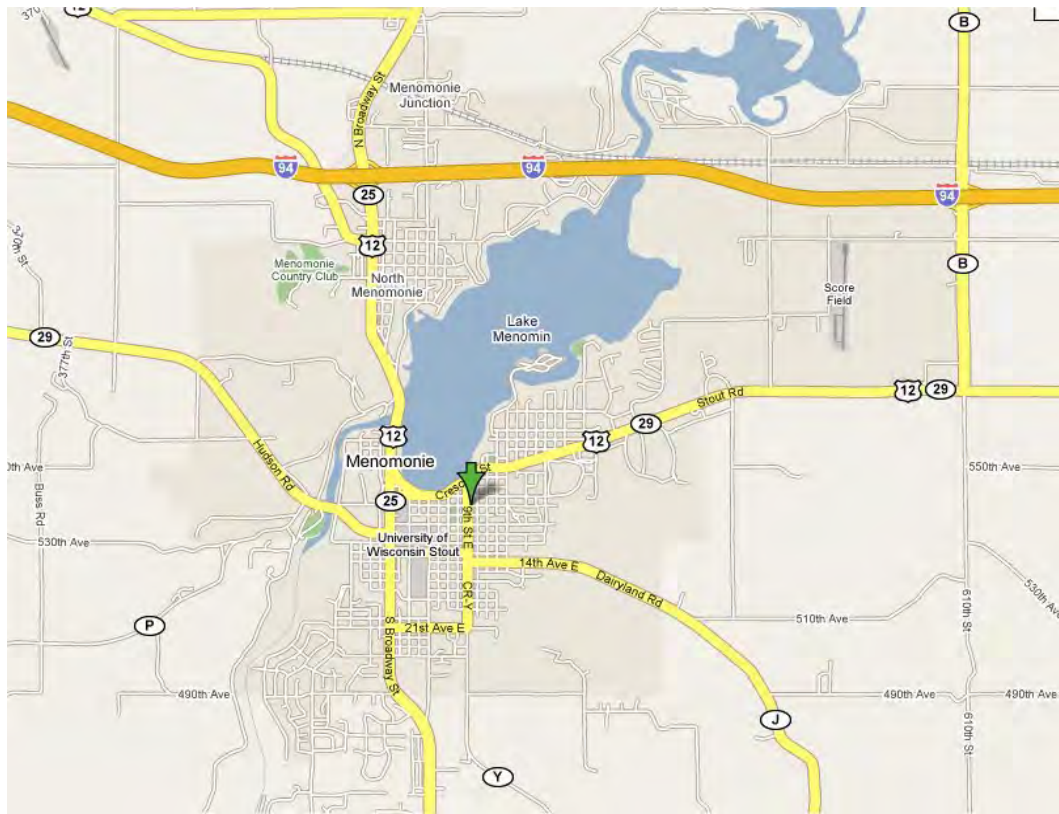
Physical Setting and General Information

Menomonie is the county seat of Dunn County. Located on Interstate 94 about 65 miles east of St. Paul, Minnesota and about 20 miles northwest of Eau Claire, Wisconsin. The City of Menomonie occupies more than 15 square miles. U.S.H. 12, S.T.H. 25, and S.T.H. 29 provide additional thoroughfares to and from the city (see Figure 2).

The City of Menomonie is known for its scenic landscape. The most striking natural features are manmade Lake Menomin, the Red Cedar River, Wilson Creek, and numerous geological features. The city is situated 805 feet above sea level and has an average mean temperature of 44 degrees Fahrenheit (annual average high of 55 degrees Fahrenheit and low 33 degrees Fahrenheit). The average annual precipitation is 31.25 inches, and the average annual snowfall is 34 inches. According to the Natural Resources Conservation Service website ([Web Soil Survey \(usda.gov\)](https://websoilsurvey.sc.egov.usda.gov/)), the most common soil types are sandy loam and silt loam. Most of the soils appear to be well drained to moderately well drained.

Designated as a third-class municipality, Menomonie has a mayor, eleven member City Council and a seven-member Plan Commission. There are approximately 9,800 acres within the corporate limits (15.4 square miles including surface waters). An estimated 3,900 acres of the city are undeveloped (City of Menomonie Comprehensive Plan).

Figure 2-1 – Menomonie Area



Source: Google Maps

Social Characteristics

Population

The State of Wisconsin Demographics Center and U.S. Census provide statistical data for the population of all municipalities in the State of Wisconsin. The statistical data, or demographics, for the City of Menomonie may indicate trends related to population growth, income, and age distribution that will be analyzed and considered when looking at future park needs.

Understanding the population dynamics of a community is critical in park planning. The population determines the types of parks a community needs, and population projections are helpful in planning for the future. City parks are not necessarily used exclusively by City of Menomonie residents therefore, it is important to look at population trends for the city and nearby communities to understand the number of potential users of the City's park system.

For the past 30 years, the City of Menomonie and nearby townships have seen an increase in population. Table 2-1 shows the population changes each decade since 1990.

Table 2-1: Historical Population: City of Menomonie and Nearby Townships

Municipality	1990	2000	2010	2020*	Numeric Change (2010-2020)	Percent Change (2010-2020)
Town of Menomonie	2,725	3,174	3,366	3,512	146	4.34%
Town of Red Cedar	1,422	1,673	2,086	2,204	118	5.66%
Town of Tainter	1,768	2,116	2,319	2,423	104	4.48%
City of Menomonie	13,547	14,937	16,264	16,461	197	1.21%

Source: U.S. Census Bureau, *Wisconsin Department of Administration

Menomonie's proximity to the Twin Cities and City of Eau Claire makes it an ideal location for commuters. The University of Wisconsin Stout and Chippewa Valley Technical College campuses make it a desirable location for those seeking post-secondary education opportunities. The city also draws a significant number of tourists due to its historic downtown, rural character, and nearby water resources. These factors have led to a sustained growth in the City's population over the last thirty years (see Table 2-2).

According to the 2013 report from the Wisconsin Department of Administration, the trend of population growth is expected to continue over the next ten years, albeit, much slower than it has in the past (see Table 2-2). Although growth is expected to dip between 2030 to 2040. As such, any actions taken on the development of parks and designated recreation areas must take into consideration this potential change of population.

Table 2-2: Projected Population: City of Menomonie

Year	2000	2010	*2020	*2025	*2030	*2035	*2040
Population (Menomonie)	14,937	16,264	16,461	17,050	17,120	17,070	17,050
% Change		8.88%	1.21%	3.58%	0.41%	-0.29%	-0.12%

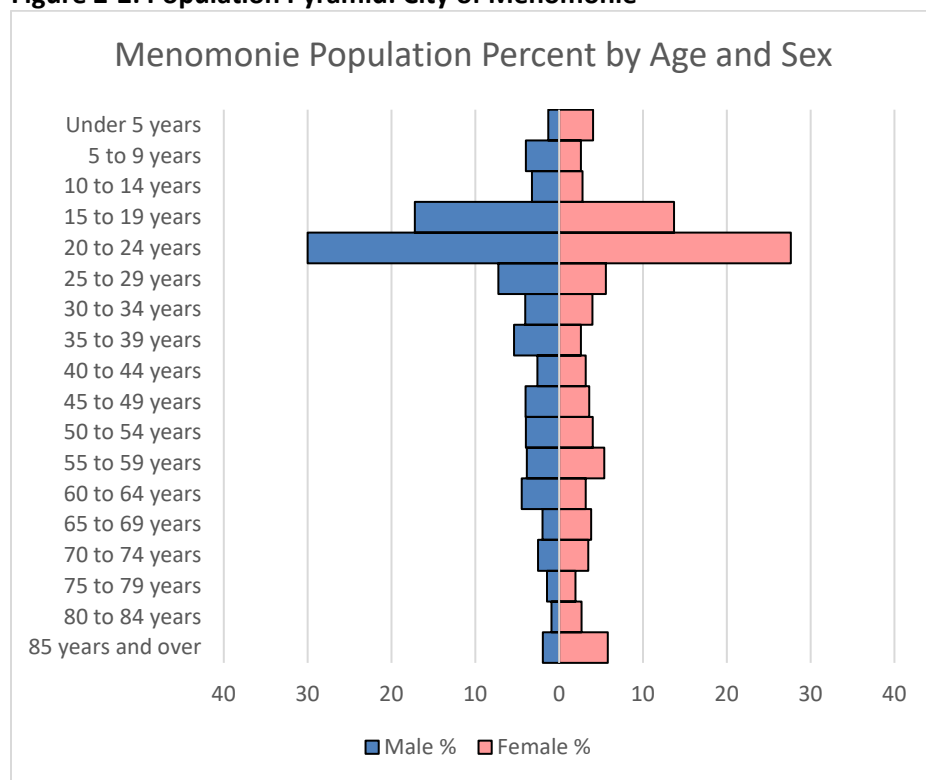
Source: U.S. Census Bureau, *Wisconsin Department of Administration

Age Distribution

Recreation needs can vary depending on a person's age. Identifying age groups and the number of residents in those groups can help the City anticipate the types of facilities needed in the future. Figure 2-2 shows the age distribution of Menomonie residents by sex. The figure illustrates the city's male and female population per age in 2020. There are two interesting population trends taking place:

- The largest age group is residents between 20 and 24. Most of these residents are UW-Stout students.
- Other than residents aged between 15 and 29, the distribution of residents in the remaining age groups does not vary greatly.

Figure 2-2: Population Pyramid: City of Menomonie



Source: 2016-2020 American Community Survey

Age not only plays an important role in determining the types of recreational amenities to provide, but also should be considered during the siting of parks. For instance, a community may choose to locate smaller neighborhood parks closer to growth areas of starter homes with young families. An aging population may require more passive type parks. The median age of a Menomonie resident is 23.8, relatively young compared to 35.1 for Dunn County residents and 39.6 for a State of Wisconsin resident. Median ages continue to rise in the region and are generally rising nationwide.

Table 2-3: Comparative Median Age

Place	1970	1980	1990	2000	2010	2020
City of Menomonie	23.2	22.5	23.5	23.2	23.4	23.8
Dunn County	24.9	25.4	28.5	30.6	33.5	35.1
State of Wisconsin	27.2	29.4	32.9	36	38.5	39.6

Source: U.S. Census Bureau, 2016-2020 American Community Survey

Economic Status

The 2016-2020 American Community Survey shows that 21.1% of all City of Marshfield residents lived below the poverty level compared to 11.7% of residents in Dunn County. This is likely due to the student population and may impact the ability to use fees as a way to pay for park maintenance or expansion.

Chapter 3

Facility Needs and Demands Assessment

National Recreation and Parks Association Standards

The National Recreation and Park Association (NRPA) provides guidelines for classifying parks and open spaces. These are meant to act as a baseline to help assess a community's offerings. The guidelines shown in Tables 3-1 provide a description of each classification, size of the park or open space, and the area it serves. Table 3-2 provides a classification and type criteria for trails. By mapping the location, classification, and services areas of the City's parks, gaps in service can be identified and addressed in the Comprehensive Outdoor Recreation Plan.

According to the NRPA Agency Performance Review, the typical park and recreation agency offers one park for every 2,323 residents served, with 10.4 acres of parkland per 1,000 residents. Although the NRPA provides guidelines for parks and open space, the unique landscape and development patterns of the community will influence the types of parks and facilities that are offered. For Menomonie, the Red Cedar River, Lake Menomin, and nearby Tainter Lake provide access to recreational opportunities that many communities don't have.

Local recreation needs can best be met by providing a variety of parks and recreation areas that serve all age groups, neighborhoods, and activity levels of the resident population. The following definitions classify these areas into nine categories.

- Neighborhood Parks
- Community Parks
- School Parks
- Sports Complex
- Large Urban Park
- Special Use Areas
- Conservancy/Natural Areas
- Park Trails
- Connector Trails

The classifications summarized in Tables 3-1 and 3-2 can be used to make park inventory and planning more meaningful. The definitions provide standards to judge the adequacy of the park system. Most of the park area consists of School Parks, Large Urban Parks, and Conservancy/Natural Areas and Mini-Parks.

Table 3-1: Parks and Open Space Classifications

Classification	General Description	Location Criteria	Size Criteria
Mini-Park	Mini-Parks serve a concentrated population or specific age group or function but can serve persons of all ages located in the immediate area.	Less than ¼ mile radius	1 acre or less
Neighborhood Park	Neighborhood Park remains the basic unit of the park system and serves as the recreational and social focus of the neighborhood. Focus is on informal active and passive recreation.	¼ to ½ mile distance and uninterrupted by non-residential roads and other physical barriers.	5 acres is considered the minimum size. 5 to 10 acres is optimal.
School Park	Depending on circumstances, combining parks with school sites can fulfill the space requirements for other classes of park, such as neighborhood, community, sports complex, and special use.	Determined by location of school district property.	Variable – depends on function.
Community Park	Serves broader purpose than a neighborhood park. Focus is on meeting community-based recreation needs, as well as preserving unique landscapes and open space.	Determined by the quality and suitability of the site. Usually serves two or more neighborhoods and ½ to 3-mile distance.	As needed to accommodate desired uses. Usually between 30 and 50 acres.
Large Urban Park	Large urban parks serve a broader purpose than community parks and are used when community and neighborhood parks are not adequate to serve the needs of the community. Focus is on meeting community based recreational needs, as well as preserving unique landscapes and open spaces.	Determined by the quality and suitability of the site. Usually serves the entire community.	As needed to accommodate desired uses. Usually a minimum of 50 acres, with 75 or more acres being optimal.
Conservancy/ Natural Areas	Lands set aside for preservation of significant natural resources, remnant landscapes, open space, and visual aesthetics/buffering.	Resource availability and opportunity.	Variable.
Sports Complex	Consolidates heavily programmed athletic fields and associated facilities to larger and fewer sites strategically located throughout the community.	Strategically located community-wide facilities.	Determined by projected demand. Usually a minimum of 25 acres, with 40 to 80 acres being optimal.
Special Use Areas	Covers a broad range of parks and recreation facilities oriented toward single-purpose visit.	Variable – dependent on specific use.	Variable.

Source: NRPA's Parks, Recreation, Open Space, and Greenway Guidelines

Table 3-2: Trail Classifications

Classification	General Description	Type Criteria
Park Trails	Multipurpose trails located within greenways, parks, and natural resource areas. Focus is on recreational value and harmony with natural environment.	Type I: Separate/single purpose, hard-surfaced trails for pedestrians or bicyclists/in-line skaters. Type II: Multipurpose, hard-surfaced trails for pedestrians and bicyclists/in-line skaters. Type III: Nature trails for pedestrians. May be hard- or soft-surfaced.
Connector Trails	Multipurpose trails that emphasize safe travel for pedestrians to and from parks and around the community. Focus is as much on transportation as it is on recreation.	Type I: Separate/single purpose, hard-surfaced trails for pedestrians or bicyclists/ in-line skaters located in independent r.o.w. (e.g., old railroad r.o.w.) Type II: Separate/single purpose, hard-surfaced trails for pedestrians or bicyclists/in-line skaters. Typically located within road r.o.w.

Source: NRPA's Parks, Recreation, Open Space, and Greenway Guidelines

Green Space Comparison

Other comparable communities in the region were contacted for population and green space estimates as shown in Table 3-3. The regional average was 27 acres per 1,000 residents.

Table 3-3: Green Space of Other Regional Communities

Community	Population (2020 DOA Est.)	Total Park Acreage (City-owned)	Acres per 1,000 Population
Rice Lake	8,788	186.00	21
Chippewa Falls	14,405	496.45	34
Eau Claire	68,429	973.70	14
Hudson	14,475	302.80	21
Marshfield	19,478	381.28	20
Menomonie	16,461	395.38	24
New Richmond	9,741	270.00	28
Somerset	2,939	126.70	43
River Falls	16,113	642.00	40

Source: Cedar Corporation, Community CORPs

Menomonie Parks by Classification

Mini-Parks

Neighborhood parks remain the basic unit of the park system and serves as the recreational and social focus of the neighborhood. The focus is on informal active and passive recreation.

Mini-parks in the City of Menomonie are:

1. Bongey Park
2. Oakwood Park

Neighborhood Parks

Neighborhood parks remain the basic unit of the park system and serves as the recreational and social focus of the neighborhood. The focus is on informal active and passive recreation. Neighborhood parks in the City of Menomonie are:

1. Elmwood Park
2. Half Moon Park
3. Wilson Park
4. Leisure Service Center
5. Fowler Court Park
6. Ridgewood Heights Park
7. Whisper Ridge

School Parks

Depending on circumstances, combining parks with school sites can fulfill the space requirements for other classes of park, such as neighborhood, community, sports complex, and special use. Typically, school parks are not open to the public during normal school hours or during school events. School parks in the City of Menomonie are:

1. Menomonie Alliance Christian School
2. Oaklawn Elementary School
3. Menomonie Middle School
4. St. Joseph's Catholic School
5. St. Paul's Evangelical Lutheran School
6. River Heights Elementary School
7. Wakanda Elementary School

Community Parks

Community parks serve broader purpose than neighborhood parks. Focus is on meeting community-based recreation needs, as well as preserving unique landscapes and open space. Many community parks in the City of Menomonie have boat landings to access Lake Menomin and shelters for people to use. Community parks in the City of Menomonie are:



1. Point Comfort Park
2. Riverside Park
3. Lakeside Park
4. Wolske Bay Park

Large Urban Parks

Large urban parks serve a broader purpose than community parks and are used when community and neighborhood parks are not adequate to serve the needs of the community. Focus is on meeting community based recreational needs, as well as preserving unique landscapes and open spaces. These parks attract users outside the community as well. Large Urban parks in the City of Menomonie are:

1. Wakanda Park
2. Lion's Game Farm
3. Phelan Park



Conservancy/Natural Areas

This refers to lands set aside for preservation of significant natural resources, remnant landscapes, open space, and visual aesthetics/ buffering. Conservancy/natural areas may be used for passive recreation or may remain undeveloped. Conservancy/Natural areas in the City of Menomonie are:

1. Lake Menomin Park
2. Stout Technology Park
3. Galloway Creek Park
4. Miller Park
5. La Pointe Park
6. Wilson Creek Park
7. Brickyard Nature Area



Sports Complex

Sport Complexes consolidate heavily programmed athletic fields and associated facilities to larger and fewer sites strategically located throughout the community. The complexes may be used for university and Menomonie School District athletics, regional tournaments, community recreation, etc. Sports Complexes in the City of Menomonie are:

1. Dunn County Recreation Park
2. UW-Stout Sports Complex
3. Menomonie Senior High School/Field House



Special Use Areas

These cover a broad range of parks and recreation facilities oriented toward single-purpose visit. Special use areas in the City of Menomonie are:

1. Cedar-Rama Park
2. Veterans Memorial at Knapp Park
3. Brickyard Disc Course
4. Sanna Park
5. Dog Park



Park Trails

Park trails are multipurpose trails located within greenways, parks, and natural resource areas. Focus is on recreational value and harmony with natural environment. Park trails in the City of Menomonie are:

1. Red Cedar Trail
2. Junction Trail/Stokke Trail/Lake Menomin Loop



Connector Trails

Connector trails are multipurpose trails that emphasize safe travel for pedestrians to and from parks and around the community. Focus is as much on transportation as it is on recreation. Connector trails in the City of Menomonie are:

1. Lakebank Nature Trail
2. 2nd Street Historic Corridor



Parks and Open Space Guidelines

One way to measure the adequacy of a community's park program is to determine the number of people it serves or has the capacity to serve. By assigning an acreage requirement for each type of park by population, its present and projected capacity can be evaluated.

The National Recreation and Parks Association (NRPA) developed standards that were intended as guidelines for use at the local level. The guidelines provided a specific acreage and type of parkland per 1,000 residents. That metric is no longer viewed as adequate since each community has varying needs based on its population. These guidelines, however, provide a baseline for levels of service (LOS). The optimum acreage for parks per 1,000 persons varies. Different planning sources set different criteria and standards. The method below looks at one national standard and compares the park needs based on the type of park. Table 3-4 shows recommended acreages for mini-parks, neighborhood parks and community parks based on the City of Menomonie's estimated 2020 population.

Table 3-4: Park Space Guidelines in the City of Menomonie

Park Type	Recommended Acreage	*Recommended Acreage for Menomonie	Acres Provided
Mini-Park	0.25 - 0.5 acres/1,000 residents	4.12 to 8.23	1.7
Neighborhood Park	1.0 - 2.0 acres/1,000 residents	16.16 to 32.92	18.3
Community Park	5.0 - 8.0 acres/1,000 residents	82.31 to 172.84	26.4
Total Acres		102.88 to 172.84	45.8

Source: National Recreation and Park Association.

**Recommended acreages are based on the 2020 U.S. Census estimated population of 16,461 residents.*

Based on this method, the City of Menomonie falls short of recommended acreages for Mini-Parks and Community Parks but meets the recommended acreage for Neighborhood Parks. It should be noted that Menomonie has several School Parks and Large Urban Parks that provide additional recreational opportunities for residents and visitors. Additionally, because of the extensive public land along Lake Menomin and the Red Cedar River and topography within the city, Menomonie has a high amount of Specialty Parks and Conservancy/Natural Parks that are available to the public.

For planning purposes, the Parks and Recreation Department will use a common standard of 15 acres of parkland per 1,000 persons (see Table 3-5). This acreage should be distributed throughout the community so all residential areas, age groups and activity levels are served. Because each community is unique, it is important that the local community establish their own standard for parkland needs. The types of parks and their recommended acreages are as follows:

Table 3-5: Recommended Park Acreage Per 1,000 Persons

Park Type	Recommended Acreage
Neighborhood Park	5.0 acres/1,000 residents
Community Park	10.0 acres/1,000 residents
Total Acres	15.0 acres/1,000 residents

Source: City of Menomonie Parks and Recreation Department

These park classifications are generally considered the main components of a park system. Other park classifications such as Large Urban Park, Natural Resource Area, and Special Use Areas, are unique to each community, therefore, recommended space needs are not provided for these park types. They are still counted when factoring overall park and recreation areas in the city.

Currently, there are approximately 827 acres of park and recreation areas plus over 9 miles of trails in the City of Menomonie. Of which, approximately 395 acres are developed and owned by the City. Looking strictly at the City-owned facilities, based on an estimated population of 16,461 in 2020, there is approximately 24 acres of park and recreation areas and trails per 1,000 persons. This far exceeds the standards that have been set for the City.

Park Service Areas

Service capabilities of parks are best described in terms of their service areas. For example, the service area radius for neighborhood parks is one-quarter to one-half mile and one-half to three miles for community parks. These two park classifications serve most residents adjacent to them. Typically, residents will walk or bike to these areas. The National Recreation and Parks Association (NRPA) provides recommendations for the area served by community parks, neighborhood parks, and mini-parks. The three (3) types of parks and their recommended service areas are shown in Table 3-6.

Table 3-6: Recommended Service Area

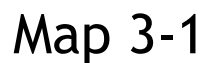
Park Type	Recommended Service Area
Mini Park	0.25 mile service radius
Neighborhood Park	0.25 - 0.5 mile service radius
Community Park	0.5 to 3 mile service radius

Source: National Recreation and Parks Association (NRPA)

Service area radii determine the effectiveness of a park in meeting local recreational demands. Man-made and natural obstacles may form physical barriers to recreational facilities within the community. These obstacles diminish the service areas of neighborhood parks and restrict their effectiveness. Normally, such obstacles do not have a similar impact on the effectiveness of large parks.

Map 3-1 shows the locations of parks and open spaces in the City of Menomonie and their classifications and service areas for neighborhood parks and community parks. The map indicates that there are enough community parks to serve City residents but there are few neighborhood parks on the northern and southern ends of the city although residents in these areas have access to other types of park and recreation areas.

City of Menomonie



Public Input

The primary sources of public input were the Recreation Advisory Board and the Community Survey. The CORP was discussed at a number of Recreation Advisory Board meetings as well as the review and recommendation by the Plan Commission and final approval by the Common Council from July 8 – July 31, 2022, to gather public input on the condition of the park and recreation facilities and to identify needs and desires for future improvements. The survey was available online and paper copies as City Hall. There were 938 responses to the survey, and all were completed online. Below are some highlights from the survey:

- The age group that has the most survey responses was 35-44 years old.
- Over half the respondents were daily to week uses of the parks.
- Over 70% use the trail system.
- The parks visited the most were: Wakanda, Riverside, and Lions Game Farm.
- The parks visited the least were: Riverwood Heights, La Pointe Park, and Oakwood Heights.
- The top three priorities were: New Shelter at Riverside Park, Replace Playground Equipment at Leisure Services Center, and Consistent Signage at the Parks.
- The top three amenities were: Playground Equipment, Basketball Courts, and Baseball Diamonds.
- Of the recreation facilities the respondents would like to see more of, the top three were: Splash Pad, Playgrounds, and Outdoor Swimming Pool.
- The most popular types of programming were: Outdoor Recreation, Family Activities, and Lifetime Sports (golf, tennis, biking).
- The top three maintenance priorities were: Amenities, Facilities, and Equipment.
- Nearly 78% of the respondents did not have any concerns about safety or accessibility in the parks.

A summary of the survey results is included in Appendix B.

Regional and State Trends

Wisconsin has a State Comprehensive Outdoor Recreation Plan (SCORP). SCORPs are intended to evaluate outdoor recreation supply, demand, trends, and issues. They are used to develop ideas about recreation's future role in the state and serve as the blueprint by providing broad guidance to local governments, communities, businesses, and organizations on recreation needs and opportunities. The outdoor recreation needs of Wisconsin's residents and visitors was assessed in the 2019-2023 SCORP. The plan is broken down into different regions. The City of Menomonie is part of the Mississippi River Corridor State Comprehensive Outdoor Recreation Plan (SCORP) Region. According to the 2019-2023 SCORP, the following activities are seeing a moderate to strong increase in interest for this region:

- Bicycling – winter/fat tire biking
- Camping – RV/pop-up
- Bicycling – mountain biking
- Riding ATVs or UTVs

- Canoeing/kayaking
- Bicycling – recreational/rail-trail biking
- Use of picnic areas/day use areas/beach areas
- Paddle boarding
- Dog walking on trails
- Hiking/walking/running on trails

Activities that are seeing a slight to moderate decrease in interest include:

- Camping – tent
- Riding dual-sport motorcycles
- Snowmobiling

Chapter 4

Parks and Recreation Facilities

Park and Trail Inventory Classification

Table 4-1 and Map 4-1 provide an inventory of the park system by park type and ownership. Map 4-2 shows the existing bike trails in the City of Menomonie area including proposed trails and routes as well as a proposed main bike route that would be signed and promoted.

The City of Menomonie owns approximately 395 acres of park land. As may be expected, the largest acreage of city park land is in the large urban park category and consists of 222.9 acres. Neighborhood parks constitute a small percentage of total acreage of city park land with 21.5 acres. There are 26.4 acres of community parks owned by the City. Other areas that complement the City of Menomonie's park and recreation opportunities are:

- The county, schools, UW-Stout, and state parks complement the City parks to a great degree.
- Dunn County Recreation Park is the home of the County Fair and draws residents and out-of-town visitors year around for activities at its arena.
- The playgrounds at the local schools fulfill a geographic need for neighborhood parks and active recreation areas.
- Don and Nona Williams Stadium is used for UW-Stout football and other sports. It provides many recreational opportunities for the city.
- The Red Cedar Trail which starts in Menomonie and follows the Red Cedar River along a former railroad bed is an asset to the community. The trail is approximately 14.5 miles long and passes through Irvington, Downsville, Dunnville, and ends by the Chippewa River at the Chippewa River State Trail. The Red Cedar Trail connects to the Chippewa Trail which takes bicyclists to Eau Claire. Eventually, the trail will also lead to the City of Chippewa Falls. About 1/4 mile of the trail is in the City of Menomonie.

Bicycle Friendly Community

The League of American Bicyclists designated Menomonie as a Bicycle Friendly Community at the Bronze level. Their decision involved careful review of the City's application and supplemental materials, as well as consultation with local cyclists and bike advocates. This award is presented only to communities with strong commitments to bicycling.

- The League made it official awards announcement on Wednesday, December 14, 2022, through the distribution of a national press release and online at www.bikeleague.org.
- The Bronze designation is valid for four years and will be up for renewal in 2026.

Table 4-1: Summary Inventory of Existing Public Park System

City Park & Rec. Lands	Mini-Parks	Neighbor-hood Parks	Com. Park	School Parks	Sports Complex	Large Urban	Special Areas	Cons. Natural Areas	Total
Bongey Park	1.1	---	---	---	---	---	---	---	1.1
Brickyard Disc Course	---	---	---	---	---	---	11.4	---	11.4
Brickyard Nature Area	---	---	---	---	---	---	---	18.34	18.34
Ceda-Rama Park	---	---	---	---	---	---	8.6	---	8.6
Dog Park	---	---	---	---	---	---	11.2	---	11.2
Elmwood Park	---	10.5	---	---	---	---	---	---	10.5
Fowlers Court Park	---	1.6	---	---	---	---	---	---	1.6
Galloway Creek Park	---	---	---	---	---	---	---	3.4	3.4
La Pointe Park	---	---	---	---	---	---	---	1.5	1.5
Lakeside Park	---	---	6.9	---	---	---	---	---	6.9
Leisure Service Center Park	---	1.6	---	---	---	---	---	---	1.6
Lion's Game Farm	---	---	---	---	---	26.4	---	---	26.4
Miller Park	---	---	---	---	---	---	---	4.2	4.2
Oakwood Park	0.6	---	---	---	---	---	---	---	0.6
Half Moon Park	---	0.6	---	---	---	---	---	---	0.6
Phelan Park	---	---	---	---	---	97	---	---	97
Point Comfort Park	---	---	4.4	---	---	---	---	---	4.4
Ridgewood Heights	---	3.3	---	---	---	---	---	---	3.3
Riverside Park	---	---	12.2	---	---	---	---	---	12.2
Sanna Park	---	---	---	---	---	---	8.9	---	8.9
Stout Technology Park	---	---	---	---	---	---	---	2.59	2.59
Veterans Memorial at Knapp Park	---	---	---	---	---	---	0.05	---	0.05
Wakanda Park	---	---	---	---	---	99.5	---	---	99.5
Whisper Ridge Park	---	2.3	---	---	---	---	---	---	2.3
Wilson Creek Park	---	---	---	---	---	---	---	52.7	52.7
Wilson Park	---	1.6	---	---	---	---	---	---	1.6
Wolske Bay Park	---	---	2.9	---	---	---	---	---	2.9
Subtotal	1.7	21.5	26.4	0	0	222.9	40.15	82.73	395.38

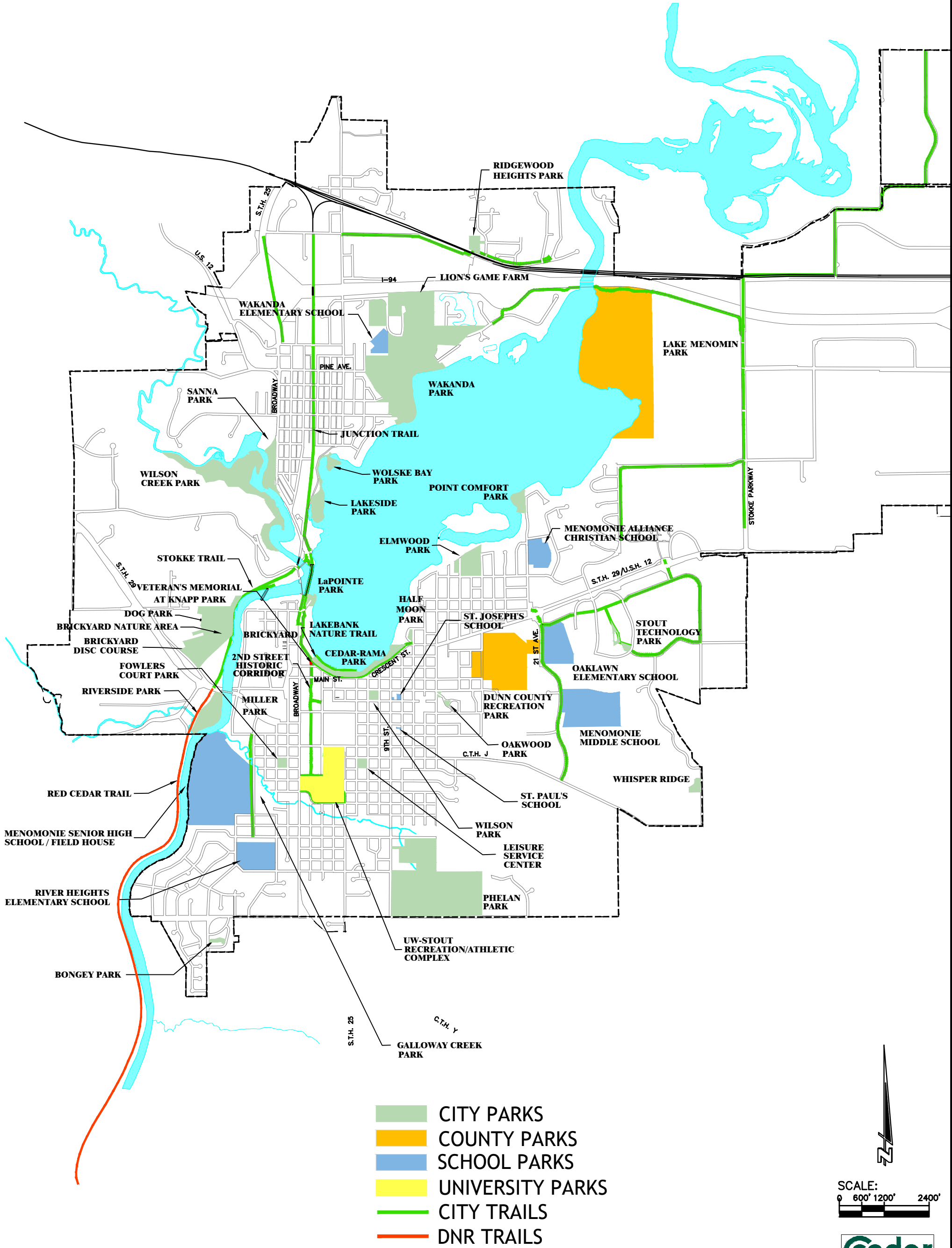
School Parks	Mini-Parks	Neighbor-hood Parks	Com. Park	School Parks	Sports Complex	Large Urban	Special Areas	Cons. Natural Areas	Total
Junior-Senior High	---	---	---	---	95	---	---	---	95
Menomonie Middle School	---	---	---	40.1	---	---	---	---	40.1
River Heights	---	---	---	20	---	---	---	---	20
Wakanda School	---	---	---	14.6	---	---	---	---	14.6
Oaklawn School	---	---	---	19	---	---	---	---	19
St. Paul's School	---	---	---	0.1	---	---	---	---	0.1
St. Joseph's School	---	---	---	0.4	---	---	---	---	0.4
Menomonie Alliance	---	---	---	10.9	---	---	---	---	10.9
SUBTOTAL	0	0	0	105.08	95	0	0	0	200.08

UW-Stout Parks	Mini-Parks	Neighbor-hood Parks	Com. Park	School Parks	Sports Complex	Large Urban	Special Areas	Cons. Natural Areas	Total
UW-Stout Sports Complex	---	---	---	---	26	---	---	---	26
SUBTOTAL	0	0	0	0	26	0	0	0	26

County Park & Rec. Lands	Mini-Parks	Neighbor-hood Parks	Com. Park	School Parks	Sports Complex	Large Urban	Special Areas	Cons. Natural Areas	Total
Dunn County Rec Park	---	---	---	---	53.8	---	---	---	53.8
Lake Menomin Park	---	---	---	---	---	---	---	151.6	151.6
SUBTOTAL	0	0	0	0	53.8	0	0	151.6	205.4

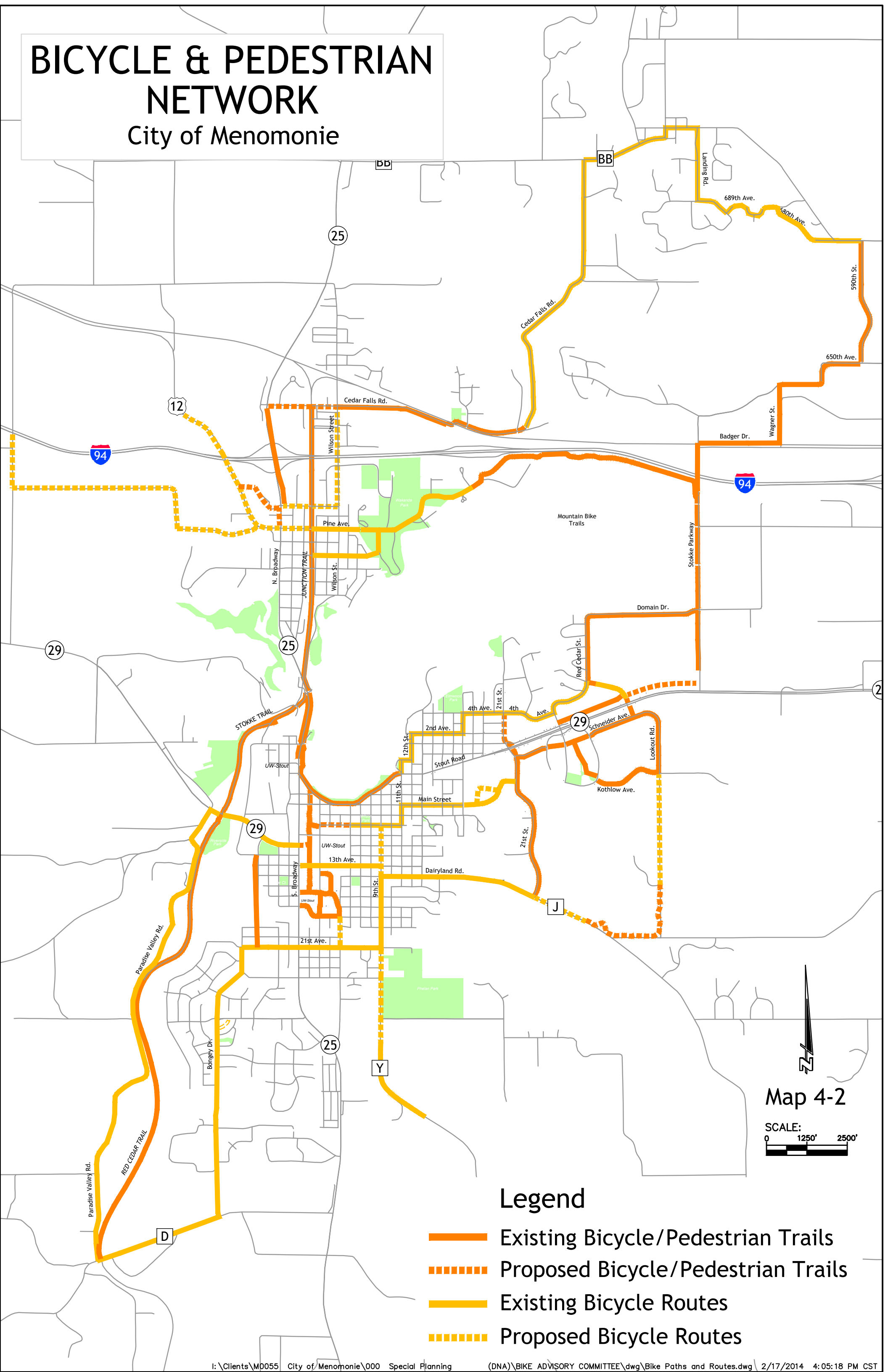
Trail System (Ownership)	Mini-Parks	Neighbor-hood Parks	Com. Park	School Parks	Sports Complex	Large Urban	Special Areas	Cons. Natural Areas	Total
Red Cedar Trail (State of Wisconsin Park)	---	---	---	---	---	---	---	---	14.5
Junction Trail/Stokke Trail/Lake Menomin Loop (City)	---	---	---	---	---	---	---	---	8.3
Lakebank Nature Trail (City)	---	---	---	---	---	---	---	---	0.28
2nd Street Historic Corridor (City)	---	---	---	---	---	---	---	---	0.25
SUBTOTAL	0	0	0	0	0	0	0	0	23.33
TOTAL	1.1	21.5	26.4	105.08	174.8	222.9	40.15	234.93	826.86

City of Menomonie



BICYCLE & PEDESTRIAN NETWORK

City of Menomonie



Legend

- Existing Bicycle/Pedestrian Trails
- Proposed Bicycle/Pedestrian Trails
- Existing Bicycle Routes
- Proposed Bicycle Routes

Parks and Recreational Inventory

Cedar Corporation and City staff conducted an inventory of the existing park and recreation facilities available within the city. Creating a park inventory is the first step in determining the future recreational needs of the city. Cataloging parks and recreational resources not only shows what is available to a community but may also reveal a need for equipment, maintenance, ADA accessibility improvements, or new amenities not currently offered in the community.

A description of each park and recreation facility within the City of Menomonie is provided and includes the amenities, location, size, and jurisdiction of each resource. Parks under the City's jurisdiction include detail pages, which lists the uses, current amenities, and planned improvements for each park.

Recommended improvements for each park are listed beginning on the next page. Some of the recommendations have a timeframe of To Be Determined (TBD). This means that the proposed improvement is dependent on other factors such as the availability of land, resources, or grant programs that can be used to offset costs.

Table 4-2 provides a summary of amenities for all park and recreation facilities in the City. Appendix B includes a detailed sheet of the amenities, needs, programming, maintenance, and proposed improvements for each park.

Park Amenities Summary

Table 4-2: Park Amenity Inventory

Name of Park		Area Acres	Restrooms	Shelters	Picnic Tables	Softball Fields	Soccer Fields	Basketball	Baseball Fields	Football Fields	Boat Landing/ Canoe Launch	Dock/Fishing Pier	Beach	Tennis Courts	Pickleball	Trail	Playground Equipment	Game Park	Band Shelter	Scenic View	Electricity	Disc Golf	Enclosed Shelter
City Park & Recreational Lands																							
1	Bongey Park	1.1			X												X						
2	Brickyard Disc Course	11.4																				X	
3	Brickyard Nature Area	18.34																					
4	Ceda-Rama Park	8.6			X											X				X			
5	Dog Park	11.2																					
6	Elmwood Park	10.5	X	X	X	X		X	X							X	X				X		
7	Fowlers Court Park	1.6	X	X	X	X		X									X				X		
8	Galloway Creek Park	3.4																		X			
9	La Pointe Park	1.5									X	X											
10	Lakeside Park	6.9	X	X	X			X			X	X				X	X				X		
11	Leisure Service Center Park	1.6		X	X												X				X		
12	Lion’s Game Farm	26.4		X	X											X		X					
13	Miller Park	4.2																					
14	Oakwood Park	0.6																					
15	Half Moon Park	0.6			X																		
16	Phelan Park	97	X	X	X	X	X	X	X								X				X	X	
17	Point Comfort Park	4.4	X	X	X						X	X					X				X		
18	Ridgewood Heights	3.3														X	X						
19	Riverside Park	12.2	X	X	X						X	X				X	X			X	X		
20	Sanna Park	8.9		X	X																		
21	Stout Technology Park	2.59														X							
22	Veterans Memorial at Knapp Park	0.05														X							
23	Wakanda Park	99.5	X	X	X	X			X		X	X	X	X	X	X	X			X	X	X	X
24	Whisper Ridge Park	2.3		X				X						X			X						
25	Wilson Creek Park	52.7														X				X			
26	Wilson Park	1.6	X	X	X														X		X		
27	Wolske Bay Park	2.9		X	X							X				X					X		
Sub Totals (acres)		395.4																					
County Park/Recreational Lands																							
28	Dunn County Rec Park	53.8	X																				
29	Lake Menomin Park	151.6		X												X							
Sub Totals (acres)		205.4																					

Name of Park		Area Acres	Restrooms	Shelters	Picnic Tables	Softball Fields	Soccer Fields	Basketball	Baseball Fields	Football Fields	Boat Landing/ Canoe Launch	Dock/Fishing Pier	Beach	Tennis Courts	Pickleball	Trail	Playground Equipment	Game Park	Band Shelter	Scenic View	Electricity	Disc Golf	Enclosed Shelter
Trails																							
33	2nd Street Historic Corridor (City)	0.25														X							
31	Junction Trail/Stokke Trail/Lake Menomin Loop (City)	8.3														X							
32	Lakebank Nature Trail (City)	0.28														X							
30	Red Cedar Trail (State of Wisconsin Park)	14.5														X							
Sub Totals (miles)		14.50																					
Local Public & Private School Parks																							
34	Menomonie Junior/Senior High	95	X			X	X			X				X									
35	Menomonie Middle School	40.1				X	X			X													
38	Oaklawn School	19				X	X		X	X							X					X	
36	River Heights	20					X							X			X						
37	Wakanda School	14.58															X						
41	Menomonie Alliance	10.9	X			X				X				X			X						
39	St. Paul's School	0.1															X						
40	St. Joseph's School	0.4															X						
Sub Totals (acres)		200.1																					
UW-Stout Parks																							
42	UW-Stout Rec./ Athletic Complex	26					X		X	X				X									
Sub Totals (acres)		26																					
Totals (acres)		826.9																					

Participation in Recreation Programs

An indicator of demand for parks is the participation in organized recreation by Menomonie and surrounding area residents.

Many of the programs have had fairly consistent enrollment from year to year. Due to COVID-19 pandemic, many of the numbers dropped in 2020 and 2021. As programming and facility usage gets back up to the pre-pandemic levels, the Parks and Recreation Department continue to evaluate these programs to identify programs that may be discontinued or added as the needs and interests of the community evolve over time.

Various City, School District, and County Parks are utilized to meet enrollment needs for the various recreation programs offered in the City of Menomonie. The most common facilities used are located at:

- Phelan Park
- Fowler Park
- Wakanda Park
- Elmwood Park
- Dunn County Recreation Park
- Menomonie High School
- UW Stout

The Leisure Service Center is operated by the Parks and Recreation Department. Approximately half of the building is leased to the Menomonie Area Senior Citizens, Inc. The Leisure Service Center is also used by various groups and organizations for meetings and other uses. Tables 4-1, 4-2, and 4-3 outlines the types of sports, facilities used, and the number of participants in selected recreation programs (summer, fall, and winter).

Table 4-3: Summer Program Attendance

		2000	2006	2012	2019	2021
1	Wakanda Waterpark	50,400	48,689	37,955	29,159	26,294
2	Pre-school Gymnastics	88	37	44	31	8
3	Tumbling & Apparatus	192	163	139	185	55
4	DNR Hunter Safety	36	32	37	24	17
5	Golf Instruction - Youth	93	91	43	30	N/O
6	Golf Instruction - Adult	25	10	12	N/O	N/O
7	Tennis Instruction - Youth	156	189	130	117	48
8	Creative Dance	158	82	98	126	55
9	Bike Safety	20	---	---		
10	Summer SCUBA	---	---	---		
11	Tennis - Jr. Tennis Team	9	---	---		
12	Swim Lessons - Day time	1,197	982	824	585	245
13	Swim Lessons - Evening	178	110	131	124	N/O
14	Weight Training	428	390	312	234	241
15	T-ball	74	113	91	99	120

16	Pitchball I	76	75	75	70	57
17	Pitchball II	n/a	46	44	50	38
18	Bambino's	100	116	75		
19	Girls Softball	76	92	152	84	43
20	Babe Ruth	17	28	15		
21	Fun with Soccer	26	---	---		
22	Picnic Kits	33	3	3	1	-
23	Red Cross CPR Staff Training	---	15	10	N/O	N/O
24	Boat Safety	20	13	14	16	N/O
25	Basketball - Little Dribbler	---	---	---		
26	Baseball Clinic/Youth Tourney	8	---	---		
27	Volleyball Instruction	---	44	101	134	67
28	Park Shelter Reservations	276	281	276	195	126
29	Leisure Service Center	4,605	3,048	1,734	8,016	1,447
30	Pool Passes (A-Adult)	6	18	10	15	5
31	(F-Family)	269	313	308	231	80
32	(Y-Youth)	39	24	32	21	2
33	(P-Punch)	19	63	66	-	-
34	Pool Party Room Rentals	12	11	35	20	27
35	Red Cross Lifeguard Training	0	11	---	N/O	N/O
36	Advanced Gymnastics	20	13	22		
37	Tourney Teams	---	(5)60 Boys (4)40 Girls	---		
38	Wrestling	---	42	115	154	23
39	Yoga	---	13	10	11	8
40	LSC 1 Senior Program			8,104		
	TOTAL	58,656	55,257	51,017	39,732	30,782

Source: City of Menomonie Parks and Recreation Department

Table 4-4: Fall Program Attendance

		2000	2006	2012	2019	2021
1	Discovery-Jump Start	15	27	35	40	13
2	Basketball for Little Dribblers	42	35	61	65	85
3	Flag Football	188	97	111	91	68
4	Football 7 on 7 (6th & 7th Grade)	---	106	108	90	82
5	Football for Little Punters	---	83	117	98	114
6	Punt, Pass & Kick	77	58	73		
7	Tumbling for Tots	---	20	39	47	32
8	Gymnastics	80	39	51	51	26
9	Advanced Gymnastics	13	---	---		
10	Leisure Services Center	3,245	4,151	1,406	9,447	3,330
11	NYSCA - Fall	-	---	---		
12	Soccer for Little Kickers	26	11	12		
13	Swim Lessons - Evenings	180	114	123	137	109
14	Swim Lessons - Saturdays	55	---	---		
15	Figure Skating/Open Skating	11	4	---		
16	Learn to Skate - Youth	33	17	---		
17	Tennis for Little Netter	7	---	8	8	9

18	Volleyball League - Men (10/team)	(10)100	-	-		
19	Volleyball League - Women (10/team)	(15)150	(21)210	16(160)	14(140)	10(100)
20	Volleyball League - Coed (10/team)	(26)260	(15)150	18(180)	11(110)	9(90)
21	Basketball League Men (10/team)	(6)60	(6)60	4(40)	5	-
22	Therapeutic Recreation	44	35	64		
23	PACE	---	9	---		
24	Yoga	---	11	26	13	8
25	LSC 1 Senior Program			8,554		
	TOTAL	4,576	5,237	11,168	14,898	8,692

Source: City of Menomonie Parks and Recreation Department

Table 4-5: Winter Program Attendance

		2000	2006	2012	2019	2021
1	Swim Lessons - Saturdays	46	---	---		
2	Swim Lessons - Evening	157	167	168	147	167
3	Soccer for the Little Kicker	13	15	26	N/O	N/O
4	Basketball for the Little Dribbler	64	82	81	92	97
5	Tennis Little Netters	12	17	18	9	N/O
6	Therapeutic Recreation	53	35	63	75	75
7	Red Cross Lifeguard Training	4	5	---	N/O	N/O
8	Figure Skating	8	---	---		
9	Gymnastics	55	57	61	63	54
10	Advanced Gymnastics	5	---	---		
11	Tumbling for Tots	---	20	36	41	50
12	Learn to Skate	56	27	---		
13	Leisure Services Center Reservations	3,694	3298	1,325	10,847	2,694
14	Volleyball Tournament-Hawaiian (10/team)	(24)240	(26)260	(26)260	0	16
15	Tri-City Volleyball Tourn. (Rotating program)	(24)240	(24)260	---		
16	Walking Program	0	---	---		
17	Jump Start Program (Discovery)	23	31	56	48	39
18	Yoga	---	18	19	13	13
19	LSC 1 Senior Programs			8,554		
	TOTAL	4,670	4,292	10,667	11,326	3,189

Source: City of Menomonie Parks and Recreation Department

Chapter 5

Other Park Related Improvements

Standardizing Park Amenities

The development of standards for park amenities will create a uniform design for the city and its parks. The uniformity will create recognition of parks and parklands, attracting more people to the park simply due to the ease of identification. The following items should be considered for standardization:

- Signs
- Shelters
- Benches
- Picnic tables
- Trash receptacles

Park Signs

Park signs identifying the facility to the public should be posted at all entrances. Signage will promote civic pride and will encourage visitors. The City of Menomonie's park directional signs are created by the Menomonie Street Department. Each sign has a symbol on top that represents a significant feature of that park. The symbol on the Wilson Park sign represents the City's band shelter that is home to the Ludington Guard Band, which holds outdoor concerts in the summer. Bicycle and Pedestrian Trail Network signs were designed in 2016. The Lake Menomin Loop was the first route to utilize the signs with the Loggers Loop likely the next route to be signed.

Park signs should be standardized to make them easily identifiable to residents and visitors. Adding park hours would eliminate the need for many smaller signs that can be found in some parks. New park signs should incorporate three elements in their design:

- A logo for City parks
- The name of each park
- Park hours

Park Shelters

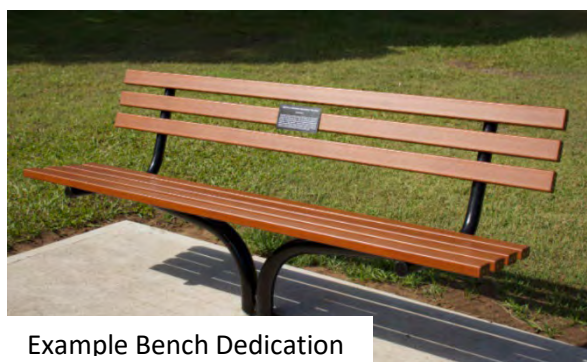
City of Menomonie has implemented "Park Shelter Reservation Procedures" for picnic shelters in the city's parks. These rules are available from the Menomonie Recreation Department and specify the hours the shelters are available for use, price of rental, permitted uses, and responsibilities of users.

Dedication of Trees and Benches

Residents may want to dedicate trees or benches on behalf of a family, organization, business, or in memory of a loved one. The City will provide a list of specific trees and bench styles that can be donated to the park of the donor's choice. The tree or bench will have a plaque to identify the donor.



Example Tree Dedication Marker



Example Bench Dedication

Park Maintenance and Landscaping

The City of Menomonie Parks and Recreation Department is responsible for maintaining the parks and mowing all City owned property. Flower planting in Cedar-Rama Park, Lakeside Park, and Wilson Park is done by the Menomonie Woman's Club. The Club is also responsible for the hanging flower baskets in the downtown area during the summer.

The Parks and Recreation Department would like to utilize groups such as the Menomonie Woman's Club to help beautify other parks and pursue grants to expand or maintain existing park infrastructure.

Naming of Parks and Recreational Areas

While the naming of City Parks and Recreational Areas will ultimately be the decision of the City Council, if requested, the following guidelines will be used in making a recommendation to the City Council.

The purpose of this policy is to provide a consistent method for naming or making name changes to public parks, public land, or recreation facilities. Names should identify significant historical, geological, and ecological areas located within the City. In addition, appropriate recognition to individuals who have contributed to the growth and development of the City should be considered.

Goals and Objectives for naming:

- The names must be purposeful, suitable, symbolic, uncontroversial and must fall under one of the classifications of this policy.

- If possible, names of facilities should be adopted before dedication or development begins for a new facility.
- Names will not be for living persons except when substantial donations are offered to the community for park and recreation purposes.
- Names for public officials will not be used without thorough justification. It will be necessary for this individual to have strong community support.

Classifications in order of priority:

1. Places and Features

Natural phenomenon
Recognizable area or neighborhood
Descriptive
Horticultural
Assumed Name

2. Historic Events

Battles
Discoveries
Explorations
Community Development

3. Organizations

Civic
Veterans
Fraternal
Other

4. Persons Name

Large donors
Historical groups
Local war heroes
National war heroes
National officials
State officials
Local official
Local individual

5. Great Ideas or Causes

Ecological
Friendship
Independence
Peace

A group may ask to adopt a park or recreation facility for improvement or maintenance purposes, and in return, the park or facility could be named after that group. A written agreement should be signed specifically detailing the future responsibilities of the group adopting the park or facility and any name change must first be approved by the City Council.

It may be appropriate in some cases to name subsections of parks to honor or pay tribute. This shall include ball fields and areas. Naming shall follow the above procedures.

Plaques and markers shall be used to recognize individuals that contributed to the growth and development of areas and facilities as project budgets allow. These markers shall be approved by the City Council before installation.

Chapter 6

Funding

Funding Sources

Often grants or other outside funding sources are required to implement projects to minimize the cost of land acquisition, park maintenance and new amenities or facilities to the community. Grants are available through several state and federal agencies to help offset the cost of park and recreation related projects. There are also non-governmental agencies and organizations that can help.

Assistance can be in the form of a grant, donation, or in-kind services. Many grants have specific time deadlines and require matching funds from the community. The most commonly used programs for park, bicycle, and pedestrian infrastructure are the Wisconsin Department of Natural Resources Knowles-Nelson Stewardship Program. These programs are listed below as well as other programs through other agencies.

The list below provides options the City may explore when researching funding opportunities for park and recreation related projects. Program parameters and deadlines may change from year to year.

Funding Programs

Most communities search for outside funding sources to offset the cost of park maintenance, land acquisition, new amenities or trails. Funding for park improvements may be provided by:

- Parks and Recreation Department budget
- Private Donations
- Public and Private Foundations
- Fundraising
- User Fees
- Grants - Federal, State, DNR

The Wisconsin Department of Natural Resources administers a wide variety of grants that are available to local governments, tribes, conservation groups, and landowners. A summary of the programs is listed below:

Acquisition & Development of Local Parks

Eligibility & Purpose: Helps to buy land or easements and develop or renovate local park and recreation area facilities for nature-based outdoor recreation purposes (e.g., trails, fishing access and park support facilities). Applicants compete for funds on a regional basis. This grant program is part of the Knowles-Nelson Stewardship Program.

ATV Enhancement

Eligibility & Purpose: Annual funding to a non-profit organization that promotes the safe and wise use of ATVs and UTVs, ATV/UTV riding and ATV/UTV education.

ATV Patrols

Eligibility & Purpose: Issued to Wisconsin county sheriff departments that participate in ATV enforcement efforts.

ATV Trails

Eligibility & Purpose: Issued to counties, towns, cities, villages and tribes to acquire, insure, develop and maintain ATV trails, areas and routes.

Boat Patrol Grants

Eligibility & Purpose: Issued to Wisconsin counties and municipalities that participate in boating enforcement efforts.

Boating Infrastructure Grant Program

Eligibility & Purpose: **Tier 1** for smaller projects that add transient boating infrastructure to the area. **Tier 2** for larger projects and are competitively judged at the national level.

Clean Diesel Grant Program

Eligibility & Purpose: To help reduce diesel emissions from both public and private vehicle fleets across the state.

Clean Vessel Act

Eligibility & Purpose: A nationwide competitive federal grant program that provides funding to states as part of an effort to clean up the nation's waterways. The CVA encourages states to subcontract with private marinas/businesses as well as local units of government to construct projects.

Friends of State Lands

Eligibility & Purpose: Grants from this program help improve facilities, build new recreation projects and restore habitat on state properties. This grant program is part of Knowles-Nelson Stewardship Program.

Habitat Area

Eligibility & Purpose: Protects and restores important wildlife habitat in Wisconsin in order to expand opportunities for wildlife-based recreation such as hunting, trapping, hiking, bird watching, fishing, nature appreciation and wildlife viewing. This grant program is part of the Knowles-Nelson Stewardship Program.

Hunter Recruitment, Development, Training and Education Grant Program

Eligibility & purpose: The primary purpose of the Hunter Recruitment, Development, Training and Education grant program is to provide cost sharing grants to local clubs, organizations, communities, governments, Wisconsin Tribes, colleges, universities and technical schools to ensure the education, training and development of safe and ethical hunters and mentors.

Land & Water Conservation Fund - Nationally Competitive Program

Eligibility & Purpose: A nationally competitive federal program that will create or reinvigorate parks and other outdoor recreation spaces in areas delineated by the Census Bureau as comprising densely settled territory that contains 50,000 or more people. The State of Wisconsin will be able to submit two applications to compete for the available funding.

Land & Water Conservation Fund - State Program

Eligibility & Purpose: This Federal program encourages creation and interpretation of high-quality outdoor recreational opportunities. Funds received by the DNR for this program are split between DNR projects and grants to local governments for outdoor recreation activities. Grants cover 50 percent of eligible project costs.

Motorized Stewardship Grants

Eligibility & Purpose: Counties, towns, cities, villages and WI tribes are eligible to request funding for new bridges on existing funded trails, major bridge reconstruction/rehabilitation & rehabilitation of funded trails.

Recreational Boating Facilities

Eligibility & Purpose: Counties, towns, cities, villages, WI tribes, sanitary districts, public inland lake protection and rehabilitation districts and qualified lake associations for recreational boating facility projects.

Recreational Trail Program

Eligibility & Purpose: Counties, towns, cities, villages, WI Tribes, and incorporated organizations may apply for grant funding for development and maintenance of recreational trails and trail-related facilities for both motorized and non-motorized recreational trail uses. Funds from this program may be used in conjunction with the state snowmobile or ATV programs and Stewardship development projects.

Shooting Range Grant Program

Eligibility & purpose: Counties, cities, villages, townships, other governmental agencies or units, clubs or organizations, businesses or corporations and educational institutions can apply for assistance in outdoor shooting range construction, including: backstops and berms, target holders, shooting benches, baffles, protective fencing, signs, trenches, gun racks, platforms, restrooms and other items considered essential for the project by the department. Indoor ranges may be eligible as well.

Snowmobile Patrols

Eligibility & Purpose: Wisconsin county sheriff departments that participate in snowmobile enforcement efforts.

Snowmobile Trail Aids

Eligibility & Purpose: Counties and WI tribes may apply for funding to provide a statewide system of well-signed and well-groomed snowmobile trails for public use and enjoyment.

Sport Fish Restoration

Eligibility & Purpose: Counties, towns, cities, villages, tribes, sanitary districts, public inland lake protection and rehabilitation districts, and qualified lake associations may apply for grants to construct fishing piers and motorboat access projects.

Stamp Funds - Wild Turkey, Pheasant and Waterfowl

Eligibility & purpose: To provide funding to support the development, maintenance, preservation, restoration and maintenance of each species and its associated habitat in Wisconsin. All non-profit conservation organizations and units of government are eligible to apply.

State Trails

Eligibility & purpose: Applications for grants under this subprogram must be for properties identified as part of the State Trail system. It is possible for sponsors to nominate additional trails for state trail designation. The Streambank Protection Program protects water quality and fish habitat in Wisconsin by establishing buffers along high-priority waterways. This grant program is part of the Knowles-Nelson Stewardship Program.

Streambank Protection

Eligibility & purpose: The Streambank Protection Program protects water quality and fish habitat in Wisconsin by establishing buffers along high-priority waterways. This grant program is part of the Knowles-Nelson Stewardship Program.

Summer Tribal Youth Program

Eligibility & purpose: The department may, in partnership with any of the federally recognized American Indian tribes or bands domiciled in this state, establish a summer program that provides members of the tribe or band who are 13 to 19 years of age with an opportunity to work on projects related to the conservation of natural resources. The department may not provide funding that exceeds 50 percent of the eligible program costs. The tribe or band shall be responsible for the remainder of those costs.

Urban Green Space

Eligibility & Purpose: These grants help buy land or easements in urban areas to preserve the scenic and ecological values of natural open spaces for nature-based outdoor recreation, including non-commercial gardening. This grant program is part of the Knowles-Nelson Stewardship Program.

Urban Rivers

Eligibility & Purpose: These grants help buy land on rivers flowing through urban or urbanizing areas to preserve or restore the scenic and environmental values of riverways for nature-based outdoor recreation. This grant program is part of the Knowles-Nelson Stewardship Program.

Utility Terrain Vehicle Trails

Eligibility & Purpose: Counties, towns, cities, villages and tribes can apply for funds for maintenance of UTV trails, minor development, gates and signing. This is a companion program to ATV Trail Aids.

Wisconsin Department of Transportation

- Bicycle and Pedestrian Facilities Program (TAP)
- Local Transportation Enhancements (TAP)
- Safe Routes to School (TAP)
- State Infrastructure Bank Program
- Transportation Economic Assistance

Wisconsin Department of Administration

- Community Development Block Grant - Public Facilities
- Community Development Block Grant - Planning
- Community Development Block Grant - Emergency Assistance Program

Wisconsin Department of Natural Resources

- Knowles-Nelson Stewardship Program
- Recreational Trails Program

Wisconsin Economic Development Corporation

- Brownfield Program

Federal Grants

- EPA Brownfield Grants
- EPA Environmental Education Grant Program
- North American Wetlands

Other

- Clubs
- Crowdfunding
- Individual Donations
- People for Bikes
- Private Foundations
- Service Organizations
- Trusts

Chapter 7

Plan Implementation

Sign Standardization

Entrance signs to parks range from small wooden signs, monuments, former bridge trestles, or no signs at all. Park signs should be standardized to make them easily identifiable to residents. New park signs should incorporate three elements in their design:

1. A logo for City parks
2. The name of each park
3. Park hours and rules

The design of the signs marking the Lake Menomin Loop should be implemented on other loops as they are identified.

General Improvements for All Parks

Certain improvements in all City parks should be made, along with park signs, to help make them consistent with each other and provide a uniform look.

1. Replace roofs on park shelters. Currently, many have galvanized metal roofs in need of repair. The Parks and Recreation Department has been replacing them with green metal roofs that blend in better with the surrounding.
2. Standardize trash receptacles and servicing.
3. Curb in parking areas. Most parks have parking delineated by wooden posts that need regular painting. Some of the posts are damaged each year by snow plowing or vehicles hitting them. Installing curb during road reconstruction will help better delineate parking areas and create a distinct edge between parking and the park areas.
4. Install bicycle racks in parks that have playground equipment, ball fields, trails, etc.
5. Conduct an audit of all city parks and recreation facilities to determine if they are Americans with Disabilities Act (ADA) compliant and identify and prioritize opportunities to bring the facilities into compliance. The City should strive to exceed all ADA Accessibility Guidelines and address all issues in an aggressive manner. Any park or facility constructed after 2010 must comply with the ADA Standards for Accessible Design, Department of Justice, September 15, 2010.

Natural Resources Available for Outdoor Recreation

Table 7-1 lists areas available to the residents of a municipality for recreation purposes. The list includes open space areas that have the potential to provide recreation opportunities whether they are currently available for public use or not. The sites may have limited use currently due to location, size, environmental concerns, ownership, access, or budgetary constraints.

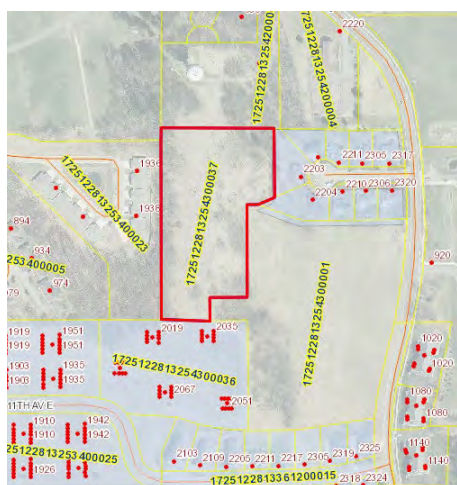
Table 7-1: Natural Resource Parcels Available for Outdoor Recreation

Location	Parcel No.	Parcel Size (acres)	Ownership	Public Access	Present Use	Future Options
A	1725122813254300037	6.06	Menomonie Development LLC	None	Undeveloped	Passive Park
B	1725122812312100061	14.02	City of Menomonie	Look Out Rd	Undeveloped	Passive Park
C	1725122813270060011	3.39	City of Menomonie	Hofland Rd SW	Undeveloped	Passive Park

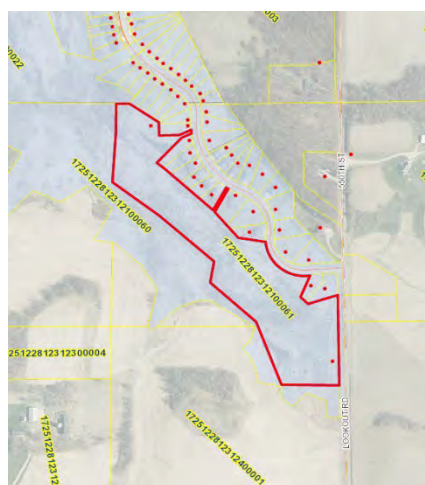
Source: City of Menomonie Parks and Recreation Department and Recreation Advisory Board

Figure 7-1: Natural Resource Parcels Available for Outdoor Recreation

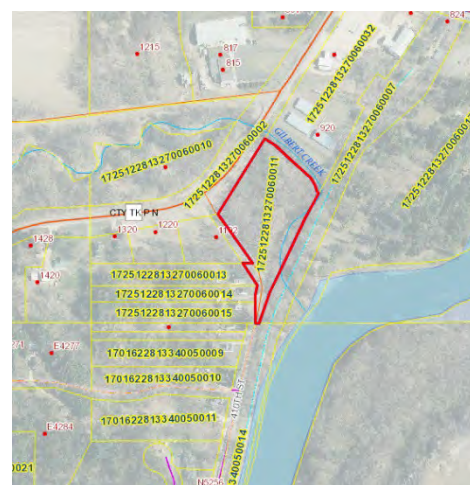
Location A



Location B



Location C



Priorities

The proposed improvements in the development plan were placed into three groups:

1. **Short Term:** To be implemented in the next 1-2 years.
2. **Mid Term:** To be implemented in the next 3-5 years.
3. **Long Term:** To be implemented in the next 6-10 years.

Tables 7-2, 7-3, and 7-4 show the proposed improvements based on recommended time frame. The priorities should be reviewed and updated each year. Map 7-1 shows the proposed improvements for Wakanda Park.

Table 7-2: Short-Term Priorities

Park Name	Proposed Improvements	Date Completed
Brickyard Disc Golf Course	Remove trees from Hole #9 and remove the wood from the front of the tee pad on Hole #8 long. Have The City assist with mowing hole #1, #2, #3, and #8.	
Dog Park	Plant trees to provide shade.	
Elmwood Park	Repair or refurbish playground equipment.	
Elmwood Park	Repair the bathrooms to make them ADA accessible and use LED/energy efficient lighting.	
Elmwood Park	Build dugouts, bleachers, and fencing for the baseball/softball field.	
Fowlers Court	Repair the bathrooms to make them ADA accessible and use LED/energy efficient lighting.	
Fowlers Court	Add a new regulation basketball court.	
Fowlers Court	Trees and other vegetation should be planted to define areas of the park.	
Lakeside Park	New playground equipment within the park.	
Leisure Services Center	Replace the playground equipment. Additional plantings should be considered.	
Phelan Park	Repair playground equipment as well as the matting around the current equipment.	
Phelan Park	Repair the bathrooms to make them ADA accessible and use LED/energy efficient lighting.	
Phelan Park	Repair fencing around tennis court where heaving has occurred.	
Phelan Park	Additional tree planting to replace large number of ash that may be lost.	
Phelan Park	Repair skate park sign.	
Point Comfort Park	Reconstruct parking lot, re-stripe parking areas, and reconstruct boat ramps.	
Point Comfort Park	Repair the bathrooms to make them ADA accessible and use LED/energy efficient lighting.	
Point Comfort Park	Clean up cluttered signage.	
Riverside Park	Install all-inclusive set of playground equipment.	
Riverside Park	Repair the bathrooms to make them ADA accessible and use LED/energy efficient lighting.	
Wakanda Park	Repair the bathrooms to make them ADA accessible and use LED/energy efficient lighting.	
Wakanda Park	Replace disc golf baskets.	
Wakanda Park	Grading and tree planting in the undeveloped areas of the park north of the maintenance shop.	
Wakanda Park	Entrance signs at the main entrances and directional signs within the park. Upgrade signs at amenities such as the ball diamonds.	
Wakanda Park	Lights at the top and bottom of the stairs leading from the upper portion of the park down to the beach area. Lights along the road adjacent to the beach area.	

Wakanda Park	New hole signs that indicate par and length of hole on disc course.	
Wilson Park	Tuck point planters on both sides of the band shelter. Relocate sculpture. Landscaping improvements.	
Wilson Park	Replace walking trail that currently goes through Wilson Park with a new concrete or paver trail.	
Wilson Park	Repair the bathrooms to make them ADA accessible and use LED/energy efficient lighting.	
Wolske Bay Park	2 nd pavilion on beach, water service, restrooms.	
Junction Trail/ Stokke Trail/Lake Menomin Loop	Reconstruct section between the Red Cedar Trail and Menomonie Library. Other trail maintenance including crack filling, patching and runoff erosion.	

Source: City of Menomonie Parks and Recreation Department and Recreation Advisory Board

Table 7-3: Mid-Term Priorities

Park Name	Proposed Improvements	Date Completed
Bongey Mini-Park	Grading of the remaining open space area to level it out and replanting of grass is recommended. A sidewalk or trail will connect 440 th Street and Timber Terrace. A variety of trees along will benches will be placed along the trail. The open space will create a nice buffer between apartment complexes.	
Brickyard Disc Golf Course	Add drainage onto Hole #2 and Drop Zone Hole #1. Replace old baskets with new baskets.	
Cedar-Rama/Lakebank Nature Trail	Extend the Lakebank Nature Trail in an easterly direction and build stairs up to Crescent Street.	
Dog Park	A shelter to provide shade for visitors, and improvements to entire site.	
Elmwood Park	New ADA restrooms.	
Fowlers Court	Replace metal slide.	
Lakeside Park	Repair the bathrooms to make them ADA accessible and use LED/energy efficient lighting.	
Lakeside Park	Install a splash pad.	
Leisure Services Center	Install a small set of playground equipment. Additional plantings should be considered.	
Phelan Park	Build a mountain biking trail through the wooded area of the park.	
Phelan Park	Construct baseball field.	
Phelan Park	Reroof shelter and pavilion.	
Riverside Park	Fishing pier with a canoe/kayak launch to easily access the river.	
Riverside Park	Construct new larger shelter.	
Riverside Park	Canoe launch area improvements.	
Riverside Park	Replace playground equipment.	
Sanna Park	Reconstruction of road and parking areas should also take place.	

Sanna Park	Put in new restrooms.	
Sanna Park	Replace roof on shelter.	
Sanna Park	New trash receptacles.	
Sanna Park	Add picnic tables.	
Sanna Park	Trails should be developed within the park and connect to Wilson Creek acreage.	
Sanna Park	Trees should be replaced in the future, if needed.	
Wakanda Park	Improve the roads, traffic control at intersections, and parking. Additional parking is proposed adjacent to activity areas to accommodate automobiles and other vehicles.	
Wakanda Park	Extra amenities such as a splash pad and/or lazy river should be added to the water park.	
Wakanda Park	Restrooms and a water spigot in the open space near the beach.	
Wakanda Park	Add Pickleball courts onto existing courts.	
Wakanda Park	Update and replace playground equipment as needed. In the update, add all inclusive equipment to areas.	
Wakanda Park	Replace and repair disc golf concrete tee pads as needed and add new hole signs that indicate par and length of hole.	
Wakanda Park	Reconstruct boat landing and docks.	
Whisper Ridge Park	Repair black top surface and paint either Pickleball or Tennis lines.	
Whisper Ridge Park	Repair basketball hoops that are already within the fenced area.	
Whisper Ridge Park	Build a parking area to make access easier for those who use the park.	
Wolske Bay Park	Run power throughout the park for winter activities and programs.	
Wolske Bay Park	Continue to address water quality and circulation issues.	

Source: City of Menomonie Parks and Recreation Department and Recreation Advisory Board

Table 7-4: Long-Term Priorities

Park Name	Proposed Improvements	Date Completed
Bongey Mini-Park	Deed back to management company.	
Brickyard Disc Golf Course	Add stairs to Hole #4 and #8 up to the tee pad on Hole #4 and down from both. Build a shed for equipment storage on the service road as well as bathrooms for the disc golf course and dog park. Purchase a lawnmower and brush hog for course maintenance.	
Dog Park	Construct restrooms to share with the disc golf course.	
Dog Park	Add higher fencing along area adjacent to the disc golf course.	
Elmwood Park	Construct a new shelter. New restrooms.	
LaPointe Park	Remove boat landing and restore shoreline.	
LaPointe Park	Extend existing lawn during removal of landing.	
LaPointe Park	Connect the La Pointe Park to the Lake Bank Trail.	

Lakeside Park	Build a new shelter that would be enclosed with running water and a kitchen.	
Oakwood Park	Install a small set of playground equipment.	
Half Moon Park	Plant flowers and other natural vegetation to make a scenic area with benches.	
Point Comfort Park	Replace roofs on the shelters and restroom building.	
Phelan Park	Construct nature trails though the recently acquired land to the south and continue around to the existing pond.	
Phelan Park	Benches along the trails along with a picnic shelter.	
Phelan Park	The southern addition contains many wetland areas. Much of this area should be left in a natural state. Improve water source for Community Gardens.	
Riverside Park	Build a new shelter that is larger than the current shelter at the park.	
Ridgewood Park	Acquire more land to the west as area develops to create on larger park.	
Ridgewood Park	Develop into a neighborhood playground with possible trails around stormwater pond.	
Wakanda Park	New lights and poles on diamond #1. New lights by diamonds #4 and #5.	
Wakanda Park	New Tennis Courts.	
Wakanda Park	Replace concession stand near the lighted Menomonie Area Youth Baseball Association (MAYBA) field. Construct a new centrally located pavilion with a concession area and restrooms.	
Wakanda Park	Replace older roofs on pavilions with new green metal roofs.	
Wakanda Park	Development of picnic areas adjacent to the lakeshore in the proposed park expansion area.	
Wakanda Park	Enhance main entrance to the park through landscaping, signage, or an arch.	
Wakanda Park	A walking/skiing trail is proposed to be constructed from the beach to the boat landing. A looped trail should also be constructed to and from the Indian mounds.	
Wakanda Park	Add another bathroom location by the playground equipment and closer to the Pickleball courts.	
Wakanda Park	Convert Diamond #6 to turf and add a new turf field to the south of Diamond #6. Relocate shelter.	
Whisper Ridge Park	Install playground equipment as the area becomes more developed.	
Wilson Creek Park	Construct a walking trail that will connect with Sanna Park.	
Wilson Park	Replace the roof membrane on the band shell.	
Wolske Bay Park	Construct trail connecting Wolske Bay Park to Lakeside Park if feasible. Continue to address water quality and circulation issues.	
City-Wide	Identify location for possible Recreation Sports Complex and Community Center.	

Source: City of Menomonie Parks and Recreation Department and Recreation Advisory Board

WAKANDA PARK

City of Menomonie



Lake Menomin

Map 7-1

SCALE:
0 75' 150' 300'

Cedar
CORPORATION

Ongoing Plan Recommendations

1. Identify one or two parks to upgrade the playground equipment to all-inclusive playground equipment.
2. Repair equipment and upgrade if repairing is not an option.
3. Repair and fix park bathrooms and make them ADA compliant.
4. Identify parks and develop a prioritization schedule to either add new or upgrade the following park amenities:
 - a. Pickleball courts
 - b. Basketball courts
 - c. Soccer fields
 - d. Disc golf courses
5. Develop and maintain a Capital Improvement Program with cost estimates for park facilities and update annually.
6. Develop consistent signage for the park facilities and implement a schedule to update the signage for each park.
7. Although not a City facility, consider efforts to support the playground and outdoor amenity improvements at River Heights Elementary School.
8. City park facilities should be upgraded by landscaping, including tree and shrub planting annually to improve the visual quality of the park system.
9. Consideration should be given to expanding the park system to include more neighborhood parks.
10. The park land dedication ordinance should be reviewed as necessary to assure that it is adequately providing for park land acquisition and/or development in the areas which are newly subdivided.
11. Consideration should be given to the needs of the physically and mentally disabled in the future development of parks in the city.
12. An effort should be made to involve citizens in the park planning process.
13. An effort should be made to continue the involvement of the City Recreation and Parks Department, Parks and Recreation Advisory Board, and service organizations in the park planning process.
14. The City should pursue state and federal financial aid programs for park and trail development, amenities, and maintenance.
15. The City should place park land acquisition and development plans in priority and utilize a capital improvements plan to implement its plan.
16. The City should continue its good working relationship with the schools, county, UW-Stout and state in the development of its park system.
17. The City should consider a passport program to encourage attendance, mindfulness, and utilization of the parks.
18. The City should consider providing trash cans in parks and along trails.
19. The City should consider adding $\frac{1}{4}$ and $\frac{1}{2}$ mile markers on trails where appropriate.
20. The City should develop an adopt a park program and develop specific maintenance tasks in partnership with other groups and non-profit organizations.

21. The City should continue to enhance and expand promotional efforts of its parks.
22. The City should continue to enhance the promotion of its parks.
23. The City should consider illuminating darker areas along the trail system where feasible.
24. Master Plans should be developed for both Wakanda Park and Phelan Park.
25. The City should consider work in conjunction with the Bicycle and Pedestrian Committee on bicycle and pedestrian improvements between and within parks.
26. The City should continue to maintain or improve the Bronze level Bicycle Friendly Community designation.

Plan Implementation

The proposed improvements may be completed by or in conjunction with help from the various groups:

- Various City Departments
- Volunteer groups from churches, schools, residents, etc.
- Organizations such as the Girl Scouts, Rotary Club, Menomonie Woman's Club, etc.

Annual Review of Plan

The City of Menomonie Parks and Recreation Plan's short, mid, and long-term priorities should be reviewed each year to evaluate successes and challenges in completing the proposed improvements.

Appendices

Appendix A – Park Facility Inventory



Bongey Park



The park is used mainly by residents in the apartment complexes surrounding the open space. The open space can be accessed from surrounding rental units as well as 400th Street and Timber Terrace. There are a total of 1.1 acres, and it is classified as a Mini-Park.

Park Inventory and Analysis

Amenities

1. Picnic tables
2. Playground
3. Benches
4. Sand box
5. Climbing ramp
6. Regulation signs

Needs

1. Update pavilion reservation Signage
2. Sand Box needs sand

Programing and General Park and Facility Maintenance

Rentals Facilities and Recreation Programing

Yearly Maintenance

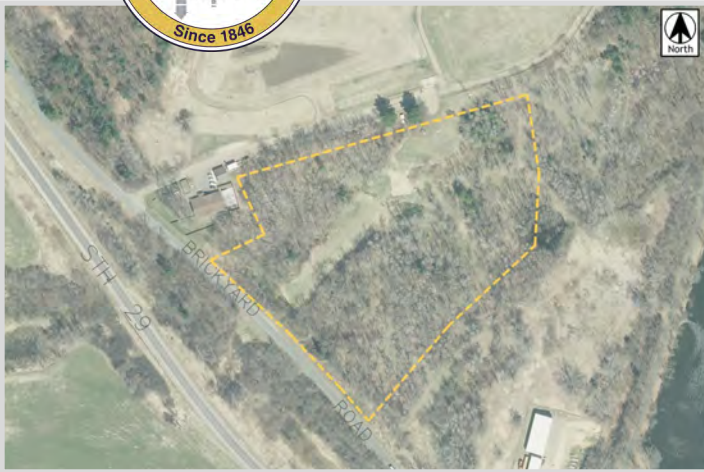
1. Mowing (by management)
2. Trash Removal

Proposed Improvements

1. Add a park sign
2. Grading of the remaining open space area to level it out and replanting of grass is recommended
3. A sidewalk or trail will connect 440th Street and Timber Terrace
4. A variety of trees along will benches will be placed along the trail.
5. Deed back to management company



Brickyard Disc Golf



This course is mainly used by UW-Stout students but is open to the public. The course is located behind the Humane Society. Take S.T.H. 29 west to Brickyard Road. There are a total of 11.4 acres, and it is classified as a Special Use Area.

Park Inventory and Analysis

Amenities

1. Disc golf (9 holes)
2. Tee pads
3. Hole markers
4. Grill area
5. Tables
6. Benches
7. Park sign
8. Regulations signs
9. Directional signs

Needs

1. Better park sign
2. Directional signage could be better

Programing and General Park and Facility Maintenance

Rentals Facilities and Recreation Programing

Yearly Maintenance

1. Mowing
2. Trash Removal
3. Most maintenance is provided by MADGO with occasional mowing provided by the Park and Recreation Department

Proposed Improvements

1. Remove trees from Hole #9 and remove the wood from the front of the tee pad on Hole #8 long
2. Have The City assist with mowing hole #1, #2, #3, and #8
3. Add drainage onto Hole #2 and Drop Zone Hole #1. Replace old baskets with new baskets
4. Add stairs to Hole #4 and #8 up to the tee pad on Hole #4 and down from both
5. Remove trees from Hole #9 and remove the wood from the front of the tee pad on Hole #8 long
6. Purchase a lawnmower and brush hog for course maintenance



Brickyard Nature Area



This is an open space and natural area acquired by the City. There are a total of 18.34 Acres, and it is classified as a Natural Resource Area.

Park Inventory and Analysis

Amenities

1. Hilly topography with tree cover

Needs

Programing and General Park and Facility Maintenance

Rentals Facilities and Recreation Programing

Yearly Maintenance

Proposed Improvements



Cedar-Rama Park



The park serves the whole community. The park may be accessed from Main and Crescent Streets. There are a total of 8.6 acres, and it is classified as a Special Use Area. The area includes the Lakebank Trail.

Park Inventory and Analysis

Amenities

- | | |
|---------------------|------------------------|
| 1. Benches | 11. Wood carvings |
| 2. Bike repair | 12. Trailhead |
| 3. Picnic table | 13. Informational sign |
| 4. Bike rack | 14. Rain garden |
| 5. Bench swing | 15. Flower beds |
| 6. Water fountain | 16. Park sign |
| 7. Observation deck | 17. Chamber sign |
| 8. Lake loop sign | 18. Flag pole |
| 9. Stairs | 19. Pet station |
| 10. Trails | |

Needs

1. Trash cans need repair/maintenance
2. Bike repair needs maintenance

Programing and General Park and Facility Maintenance

Rentals Facilities and Recreation Programing

Yearly Maintenance

1. Mowing
2. Trash Removal
3. Steep slopes require special attention to maintain vegetation and control surface water
4. Upkeep/trimming (trail)

Proposed Improvements

1. Create a new access point to Lake Bank trail on the west end of the trail on city property
2. Extend the Lakebank Nature Trail in an easterly direction and build stairs up to Crescent Street
3. Provide access to Crescent Street on east end of trail
4. Explore boardwalk
5. Outfit with colorful chairs and tables
6. Additional Crescent Street crossing

7. Re-name park



Dog Park



The park is available to city dog owners. The dog park is located behind the Humane Society. Take S.T.H 29 west to Brickyard Road. There are a total of 11.2 acres, and it is classified as a Special Use Area.

Park Inventory and Analysis

Amenities

1. Large dog gated area
2. Small dog gated area
3. Waste disposal station
4. Water area
5. Staging area
6. Fee box
7. Park sign
8. Regulations signs
9. Directional sign

Needs

Programing and General Park and Facility Maintenance

Rentals Facilities and Recreation Programing

Yearly Maintenance

1. Mowing
2. Trash Removal

Proposed Improvements

1. Plant trees to provide shade
2. A shelter to provide shade for visitors, and improvements to entire site
3. Construct restrooms to share with the disc golf course
4. Grass needs to mowed more often
5. Terrain needs to be graded (currently steep)
6. More regulations signs
7. Add higher fencing along area adjacent to disc golf course



Elmwood Park



The park serves the neighborhood east of the central business district and south of Lake Menomin. The site is easily accessible from three sides by pedestrians and vehicles. There are a total of 10.5 acres, and it is classified as a Neighborhood Park.

Park Inventory and Analysis

Amenities

- | | |
|-----------------------|---------------|
| 1. Basketball hoop | 11. Shelter |
| 2. Picnic tables | 12. Park sign |
| 3. Walk/Bike path | 13. Ballfield |
| 4. Drinking fountain | 14. Bleachers |
| 5. Benches | |
| 6. Playground | |
| 7. Climbing structure | |
| 8. Bike rack | |
| 9. Restroom | |

Needs

1. Update shelter reservation Signage
2. More blacktop surface area
3. New picnic tables
4. Playground needs more woodchips
5. Restrooms need to be brought up to ADA code

Programing and General Park and Facility Maintenance

Rentals Facilities and Recreation Programing

1. Shelter
2. Ballfield

Yearly Maintenance

1. Mowing
2. Trash Removal

Proposed Improvements

1. Repair or refurbish playground equipment
2. Repair the bathrooms to make them ADA accessible and use LED/energy efficient lighting
3. Build dugouts, bleachers, and fencing for the baseball/ softball field. Re-define playground zones
4. Add wood chips to playground
5. Update sledding hill
6. Develop walking trail throughout park

7. Warming shelter for winter use
8. Explore tubing hill
9. Explore tubing hill
10. Update sledding hill
11. Construct a new shelter



Fowler Court Park



The park is located in one of the best defined and oldest neighborhoods in the community. The site is easily accessible from all sides by pedestrians and vehicles. There are a total of 1.6 acres, and it is classified as a Neighborhood Park.

Park Inventory and Analysis

Amenities

1. Shelter
2. Bleachers
3. Softball field
4. Slide
5. Swing set
6. Basketball court
7. Playground set
8. Restrooms
9. No alcohol signs

Needs

1. Update shelter reservation Signage
2. Rusty bleachers—could need updating in future
3. Potentially replace slide
4. Replace basketball court

Programing and General Park and Facility Maintenance

Rentals Facilities and Recreation Programing

1. Shelter
2. Ballfield

Yearly Maintenance

1. Mowing
2. Trash Removal

Proposed Improvements

1. Repair the bathrooms to make them ADA accessible and use LED/energy efficient lighting
2. Add a new regulation basketball court
3. Trees and other vegetation should be planted to define areas of the park
4. Update playgrounds
5. Trim Trees
6. Redefine playground area
7. Add wood chips
8. Consider removal of ball field
9. Renovate basketball court
10. Add new shelter
11. Children's playground close to 3rd street
12. Replace metal slide



Galloway Creek Park



This is an open space and natural area acquired by the City. There are a total of 3.4 acres, and it is classified as a Natural Resource Area.

Park Inventory and Analysis

Amenities

- 1. Ravine that is heavily wooded

Needs

Programing and General Park and Facility Maintenance

Rentals Facilities and Recreation Programing

Yearly Maintenance

- 1. Correct erosion
- 2. Stabilize banks
- 3. Improve water flow

Proposed Improvements



La Point Park



The road to the water's edge is steep and parking is limited. There are a total of 1.5 acres, and it is classified as a Natural Resource Area.

Park Inventory and Analysis

Amenities

1. Boat ramp
2. Regulations signs

Needs

1. Regular maintenance

Programing and General Park and Facility Maintenance

Rentals Facilities and Recreation Programing

1. UW-Stout Water Skiing Club

Yearly Maintenance

Proposed Improvements

1. Restore to passive park setting
2. Bike rest location for lake loop
3. Bike racks
4. Add picnic tables
5. Add canoe launch
6. Remove boat landing and restore shoreline
7. Extend existing lawn during removal of landing
8. Connect the La Pointe Park to the Lake Bank Trail



Lakeside Park



The location of this park allows it to be available to all citizens in the community including students from UW-Stout. The site is just off of Wolske Bay Road. There are a total of 6.9 acres, and it is classified as a Community Park.

Park Inventory and Analysis

Amenities

- | | |
|-----------------------|-----------------------|
| 1. Shelter | 11. Walking Path |
| 2. Restrooms | 12. Climbers |
| 3. Basketball pad | 13. Tables |
| 4. Fishing pier (ADA) | 14. Rain garden sign |
| 5. Swing set | 15. Park sign |
| 6. Slide | 16. Regulations signs |
| 7. Grill | 17. Interpretive sign |
| 8. Boat Launch | |
| 9. Boat dock | |
| 10. Flower bed | |

Needs

1. Update shelter reservation signage
2. Shelter windows need to be fixed
3. Basketball net needs to be replaced
4. Parking lot needs to be resurfaced
5. Climbers need paint
6. No protective barrier under swings, slide or other play areas

Programing and General Park and Facility Maintenance

Rentals Facilities and Recreation Programing

1. Shelter

Yearly Maintenance

1. Mowing
2. Trash Removal
3. Flowers

Proposed Improvements

- | | |
|---|--|
| <ol style="list-style-type: none"> 1. New playground equipment within the park 2. Install inclusive playground and defined playground area 3. Shade Structures 4. Showcase view of the lake and downtown 5. Explore splash pad location 6. Add another shelter 7. Add trail to library 8. Landscape steps to lake | <ol style="list-style-type: none"> 7. Repair the bathrooms to make them ADA accessible and use LED/energy efficient lighting 8. Install a splash pad 9. Build a new shelter that would be enclosed with running water and a kitchen |
|---|--|



Leisure Center



This playground has a reasonably well-defined service area within an area served by other recreation facilities. The site is just east of the UW-Stout Campus. There are a total of 1.6 acres, and it is classified as a Neighborhood Park.

Park Inventory and Analysis

Amenities

1. Shelter
2. Climbing dome
3. Swings
4. Horseshoe pits
5. Picnic tables
6. Portable basketball hoop

Needs

1. Update pavilion reservation Signage

Programing and General Park and Facility Maintenance

Rentals Facilities and Recreation Programing

1. Yoga
2. Social Dancing (lessons)
3. Tennis Lessons (grads 3-6)
4. Sports 4 Tots
5. Tumbling for Tots
6. Tots in Motion or Music
7. Tumbling Fundamentals
8. After School Recreation
9. Thursday Thrill Seekers (adults with special needs)
10. Paint'n Play
11. Shelter

Yearly Maintenance

1. Mowing
2. Trash Removal

Proposed Improvements

1. Replace the playground equipment
2. Additional plantings should be considered
3. Sign



Lion's Game Farm



This is an open space and natural area acquired by the City. There are a total of 26.4 acres, and it is classified as a Large Urban Park.

Park Inventory and Analysis

Amenities

1. Wooded area with small ponds
2. Elk
3. Deer
4. Buffalo
5. Large fenced in area to view animals
6. Walking trails
7. Shelter
8. Picnic tables
9. Entrance sign

Needs

Programing and General Park and Facility Maintenance

Rentals Facilities and Recreation Programing

Yearly Maintenance

1. Routine maintenance of fencing
2. Routine maintenance of buildings

Proposed Improvements



Miller Park



There is vehicular and pedestrian access along S.T.H. 29 and 3rd and 5th Street West. There are a total of 4.2 acres, and it is classified as a Natural Resource Area.

Park Inventory and Analysis

Amenities

1. Grass areas

Needs

Programing and General Park and Facility Maintenance

Rentals Facilities and Recreation Programing

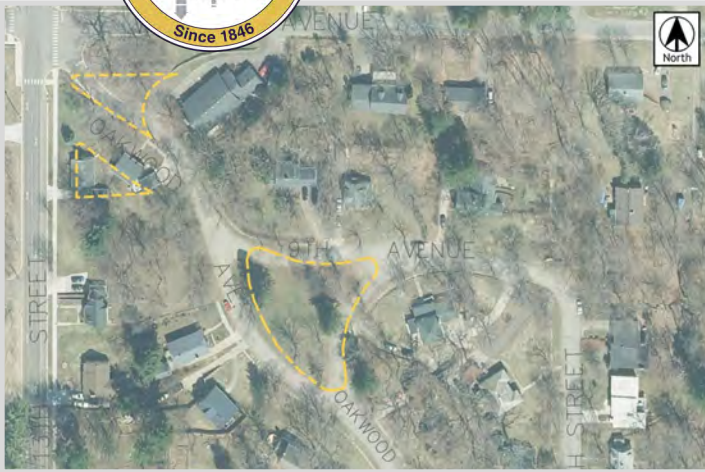
Yearly Maintenance

1. Mowing

Proposed Improvements



Oakwood Park



The park serves the immediate neighborhood. The site is accessible from Oakwood Boulevard. There are a total of 0.6 acres, and it is classified as a Mini-Park.

Park Inventory and Analysis

Amenities

Needs

1. Trees need maintenance

Programing and General Park and Facility Maintenance

Rentals Facilities and Recreation Programing

Yearly Maintenance

1. Mowing

Proposed Improvements

1. Install a small set of playground equipment



Half Moon Park



This park serves the immediate neighborhood. There is vehicular and pedestrian access. There are a total of 0.6 acres, and it is classified as a Neighborhood Park.

Park Inventory and Analysis

Amenities

1. Picnic table
2. Bench

Needs

Programing and General Park and Facility Maintenance

Rentals Facilities and Recreation Programing

Yearly Maintenance

1. Mowing
2. Trash Removal

Proposed Improvements

1. Plant flowers and other natural vegetation to make a scenic area with benches



Phelan Park



The park serves the neighborhood east of Broadway Street and south of CTH J. Park access is from 21st Avenue extended east of 9th Street on the north side of the park. There are a total of 97 Acres, and it is classified as a Large Urban Park.

Park Inventory and Analysis

Amenities

- | | |
|----------------------|--------------|
| 1. Playground | 11. Pavilion |
| 2. Shelter | 12. Grills |
| 3. Restrooms | |
| 4. Disc Golf | |
| 5. Softball Field | |
| 6. Pond | |
| 7. Skate Park | |
| 8. Soccer Field | |
| 9. Signs | |
| 10. Community garden | |

Needs

1. Update shelter reservation Signage
2. Playground surface needs to be replaced
3. Remove broken/rusted playground equipment
4. No Basketball hoop
5. Slide needs to be replaced/removed
6. Skate park/skate park sign needs to be repaired
7. Bike rack currently doesn't meet city bike requirements

Programing and General Park and Facility Maintenance

Rentals Facilities and Recreation Programing

1. Shelter
2. Menomonee Community Gardens (managed by others)
3. Youth Flag Football
4. 7 on 7 Football League
5. Football for the Little Punters

Yearly Maintenance

1. Mowing
2. Trash Removal
3. Paint

Proposed Improvements

- | | |
|---|---|
| <ol style="list-style-type: none"> 1. Repair playground equipment as well as the matting around the current equipment 2. Repair the bathrooms to make them ADA accessible and use LED/energy efficient lighting 3. Repair fencing around tennis court area 4. Additional tree planting to replace ash trees 5. Repair skate park sign 6. Construct baseball field | <ol style="list-style-type: none"> 7. Explore all inclusive bike and skate park 8. Consider active aging park location 9. Update or remove grills 10. Explore winter activities 11. Reroof shelter and pavilion 12. Picnic tables need to be upgraded 13. Overall park lighting (currently none) 14. Shade Structures |
|---|---|



Point Comfort Park



The site is somewhat removed from existing development. The parks main entrance and parking is off of Point Comfort Road. There are a total of 4.4 acres, and it is classified as a Community Park.

Park Inventory and Analysis

Amenities

1. Boat landing
2. Dock/fishing pier
3. Playground
4. Pavilions
5. Shelter
6. Restrooms
7. Park sign
8. Picnic Tables
9. Directional signs
10. Grills

Needs

1. Playground equipment needs to be cleaned/maintain
2. Update Beach
3. Update pavilion reservation Signage

Programing and General Park and Facility Maintenance

Rentals Facilities and Recreation Programing

1. Pavilion

Yearly Maintenance

1. Mowing
2. Trash Removal
3. Paint

Proposed Improvements

1. Reconstruct parking lot, re-stripe parking areas, and reconstruct boat ramps
2. Consider adding accessible launching facilities
3. Clean up cluttered signage
4. Repair the bathrooms to make them ADA accessible and use LED/energy efficient lighting
5. Update small beach area
6. Look into a natural play structure

7. Remove old playground equipment
8. Update or remove grills
9. Replace roofs on the shelters and restroom building



Ridgewood Heights Park



The park serves the immediate neighborhood. The site can be accessed from Wiggins Road. There are a total of 3.3 acres, and it is classified as a Neighborhood Park.

Park Inventory and Analysis

Amenities

1. Playground
2. Storm water pond
3. Park sign

Needs

1. Shade
2. Garbage bins
3. New trees

Programing and General Park and Facility Maintenance

Rentals Facilities and Recreation Programing

Yearly Maintenance

1. Mowing

Proposed Improvements

1. Acquire more land to the west as area develops to create on larger park
2. Develop into a neighborhood playground with possible trails around stormwater pond



Riverside Park



The site is accessible to the general community by automobile, bicycles, and pedestrians. UW-Stout use this park extensively. The site is easily accessible by pedestrians, bicyclists, and vehicles. There are a total of 12.2 acres, and it is classified as a Community Park.

Park Inventory and Analysis

Amenities

1. Playground
2. Pavilion
3. Restrooms
4. Park sign
5. Grills
6. Scenic view
7. Nature trail
8. Boat ramp/Fishing pier
9. Picnic tables

Needs

1. Update pavilion reservation Signage
2. Swings are crooked
3. Exercise equipment needs basic maintenance

Programing and General Park and Facility Maintenance

Rentals Facilities and Recreation Programing

1. Pavilion

Yearly Maintenance

1. Mowing
2. Trash Removal

Proposed Improvements

1. Install fishing pier with canoe/kayak launch facilities
2. Repair the bathrooms to make them ADA accessible and use LED/energy efficient lighting
3. Remove old playground equipment
4. Install all-inclusive equipment
5. Consider adding a challenge course to complement fitness equipment
6. Lacking playground equipment

7. Update or remove grills
8. Construct new larger shelter
9. Canoe launch area improvements



Sanna Park



The site services community residents and regional tourist traffic. There is vehicular access off North Broadway (Highway 25/12). Pedestrian access is restricted by the high volume of traffic. There are a total of 8.9 acres, and it is classified as a Special Use Area.

Park Inventory and Analysis

Amenities

1. Shelter
2. Picnic tables
3. Grills
4. Park sign

Needs

1. Graffiti clean up

Programing and General Park and Facility Maintenance

Rentals Facilities and Recreation Programing

Yearly Maintenance

1. Mowing

Proposed Improvements

1. Reconstruction of road and parking areas should also take place
2. Put in new restrooms
3. Replace roof on shelter
4. New trash receptacles
5. Add picnic tables/benches
6. Trails should be developed within the park and connect to Wilson Creek acreage

7. Trees should be replaced in the future, if needed



Stout Technology Park



The site services employees in the Stout Technology Park. There is vehicular access off Red Cedar Street and Technology Drive. There are a total of 2.59 acres, and it is classified as a Natural Conservancy Area.

Park Inventory and Analysis

Amenities

1. Paved walking trail
2. Pond

Needs

1. Entrance sign

Programing and General Park and Facility Maintenance

Rentals Facilities and Recreation Programing

Yearly Maintenance

1. Mowing

Proposed Improvements



Veteran's Memorial at Knapp Park



The site serves community residents, UW-Stout students, and regional tourist traffic. There is vehicular access off Crescent Street and 6th Avenue along with pedestrian access from the downtown area. There are a total of 0.05 acres, and it is classified as a Special Use Area.

Park Inventory and Analysis

Amenities

1. Raised flower beds
2. Bench
3. Memorial
4. Flag pole
5. Drinking fountain
6. Trail

Needs

1. Examine cement surface patching

Programing and General Park and Facility Maintenance

Rentals Facilities and Recreation Programing

Yearly Maintenance

1. Mowing
2. Trash Removal
3. Flowers (not done by city)

Proposed Improvements



Wakanda Park



This regional park serves Menomonie during the week and the region during the weekend and holidays. The park has three entrances which are located off residential streets. There are a total of 99.5 acres, and it is classified as a Large Urban Park.

Park Inventory and Analysis

Amenities

- | | |
|-------------------------------|--------------------------|
| 1. Baseball/softball diamonds | 11. Maintenance building |
| 2. Shelters | 12. Grills |
| 3. Disc golf (18 hole) | 13. Restrooms |
| 4. Pickleball courts | 14. Batting cage |
| 5. Tennis court | 15. Indian mounds |
| 6. Playground | 16. Boat launch area |
| 7. Pavilion | 17. Park signs |
| 8. Beach | 18. Picnic tables |
| 9. Water park | 19. Fishing pier |
| 10. Concession building | 20. |

Needs

1. Update shelter reservation signage
2. Playground equipment needs maintenance
3. Pavilion kitchen needs improvements (ceiling leaking)
4. Grills at Shelters need to be replaced
5. Signs need to be bigger (overall)
6. Annual upkeep in water park (every year)

Programing and General Park and Facility Maintenance

Rentals Facilities and Recreation Programing

1. Pitchball
2. T-Ball
3. Pickleball
4. Pavilion
5. Shelter

Yearly Maintenance

1. Mowing
2. Trash Removal
3. Tree Management
4. Baseball diamond maintenance

Proposed Improvements

- | | |
|---|---|
| 1. Repair the bathrooms to make them ADA accessible and use LED/energy efficient lighting | 7. Upgrade signs at amenities such as the ball diamonds |
| 2. Shade structures—throughout the park | 8. Lights at the top and bottom of the stairs leading from the upper portion of the park down to the beach area. Lights along the road adjacent to the beach area |
| 3. Replace disc golf baskets | 9. New hole signs that indicate par and length of hole on disc course |
| 4. Grading and tree planting in the undeveloped areas of the park north of the maintenance shop | 10. More pickleball courts |
| 5. Main entrances and directional signs within the park | 11. New basketball court |
| 6. More variety/inclusive playground equipment needed | |



Whisper Ridge



The park was recently acquired by the City serving the Whisper Ridge subdivision. The site is easily accessible from a sidewalk on Nicholas Drive. There are a total of 2.3 acres, and it is classified as a Neighborhood Park.

Park Inventory and Analysis

Amenities

1. Playground
2. Basketball courts
3. Tennis court
4. Lights
5. Pavilion

Needs

1. Update pavilion reservation Signage
2. One basketball court needs a net
3. The black top needs to be replaced

Programing and General Park and Facility Maintenance

Rentals Facilities and Recreation Programing

Yearly Maintenance

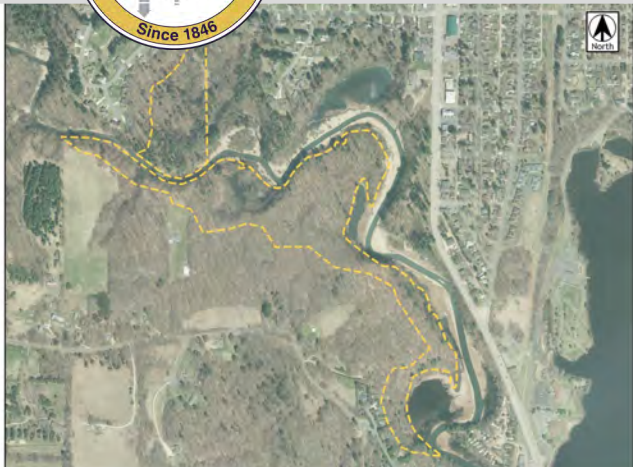
1. Mowing
2. Trash Removal

Proposed Improvements

1. It would be nice to have separate basketball court and tennis court
2. Renovate court to pickleball
3. Build a parking area to make access easier for those who use the park
4. Install playground equipment as the area becomes more developed



Wilson Creek Park



This is an open space and natural area acquired by the City. There are a total of 52.7 acres, and it is classified as a Natural Resource Area.

Park Inventory and Analysis

Amenities

1. Natural vegetation and steep slopes typify Wilson Creek
2. 5 acres accessible along creek

Needs

Programing and General Park and Facility Maintenance

Rentals Facilities and Recreation Programing

Yearly Maintenance

Proposed Improvements

1. Construction of a walking trail that connects Wilson Creek Park to Sanna Park



Wilson Park



Immediate neighborhood for day use plus visitors who may be in the neighborhood for other purposes. The site is easily accessible from any direction for vehicles and pedestrians. There are a total of 1.6 acres, and it is classified as a Neighborhood Park.

Park Inventory and Analysis

Amenities

1. Bandshell
2. Restroom
3. Farmers market
4. Fountain
5. Park sign

Needs

1. Restrooms need maintenance and general repairs
2. More signage is needed

Programing and General Park and Facility Maintenance

Rentals Facilities and Recreation Programing

1. Band Shell
2. Farmers Market
3. Farmers Market and Band Shell

Yearly Maintenance

1. Mowing
2. Trash Removal

Proposed Improvements

1. Tuck point planters on both sides of the band shelter
2. Replace walking trail that currently goes through Wilson Park with a new concrete or paver trail
3. Repair the bathrooms to make them ADA accessible and use LED/energy efficient lighting
4. Stronger voltage needed around the farmers market
5. Replace the roof membrane on the band shell
6. Relocate sculpture

7. Landscaping improvements



Wolske Bay Park



The park location allows access for all citizens. There is a parking lot just off of Wolske Bay Road. There are a total of 2.9 acres, and it is classified as a Community Park.

Park Inventory and Analysis

Amenities

1. Trails
2. Shed
3. Shelters
4. Pier (ADA accessible)
5. Circulation pumps
6. Grill
7. Bench
8. Park sign
9. Fishing pier
10. Picnic tables
11. Power in park
12. Christmas lights

Needs

1. Update shelter reservation signage
2. Surrounded by toxic blue green algae

Programing and General Park and Facility Maintenance

Rentals Facilities and Recreation Programing

1. Shelters

Yearly Maintenance

1. Mowing
2. Trash Removal

Proposed Improvements

1. Water service
2. New shelter with community fire pit
3. Bathrooms
4. Run power throughout the park for winter activities and programs
5. Continue to address water quality and circulation issues
6. Construct trail connecting Wolske Bay Park to Lakeside Park if feasible



Dunn County Recreation Park



Dunn County Recreation Park services the region at fair time and special events other times of the year. The community uses the park for local events and recreation activities. There are a total of 53.8 acres, and it is classified as a Sports Complex.

Park Inventory and Analysis

Amenities

1. Ice arena
2. Restrooms
3. Picnic area
4. Grandstand
5. Track
6. Horse barn
7. Exhibition structures

Needs

1. Roads and parking areas need to be defined
2. Entrance sign

Programing and General Park and Facility Maintenance

Rentals Facilities and Recreation Programing

1. Owned and operated by Dunn County

Yearly Maintenance

Proposed Improvements

1. Internal reorganization would result in improved circulation and space utilization
2. The site should be programmed for more use
3. On-site circulation and space use needs to be redefined
4. Future use plans should be developed in cooperation with the City, Menomonee School District and UW-Stout



Lake Menomin Park



Menomin Park services is a nature park and serves the entire community. There are a total of 151.6 acres, and it is classified as a Conservancy Natural Resource Area.

Park Inventory and Analysis

Amenities

1. Shelter
2. Trail

Needs

Programing and General Park and Facility Maintenance

Rentals Facilities and Recreation Programing

1. Owned and operated by Dunn County

Yearly Maintenance

1. Soil conditions will create the most serious problems-- erosion, medium for plants, waste disposal and intense use.

Proposed Improvements

1. Restrooms
2. Playground
3. Baseball/softball fields
4. Lights



2nd Street Historic Corridor



The trail is a historic walking and biking corridor that travels through the historic downtown and UW-Stout campus. It is mainly used by UW-Stout students and people visiting downtown business. The trail is 1,300 feet in length, and it is classified as a Trail.

Park Inventory and Analysis

Amenities

1. Time capsule / stone base plaque
2. Trails
3. Park sign
4. Directional sign
5. Historic nodes along route
6. Veteran's Memorial is located on the north end
7. Landscaping and plantings along corridor

Needs

1. Update pavilion reservation Signage

Programing and General Park and Facility Maintenance

Rentals Facilities and Recreation Programing

Yearly Maintenance

Proposed Improvements



Junction Trail / Stokke Trail / Lake Menomin Loop



The Junction Trail/Stokke Trail/Lake Menomin Loop is located on Hwy 29 at the DNR headquarters and is 8.3 miles in length. It connects the Red Cedar Trail and extends up the river and across S.T.H 25/Broadway and follows an old railroad bed up to Cedar Falls Road crossing Interstate 94. The trail travels on-road through Wakanda Park and a neighborhood as it circles Lake Menomin. It is classified as a Trail.

Park Inventory and Analysis

Amenities

1. Benches
2. Views of Lake Menomin and Red Cedar River
3. Black top trails
4. Bike Fix-it stations
5. Trail maps
6. Lake informational signs
7. Trail signage

Needs

1. Entrance sign

Programing and General Park and Facility Maintenance

Rentals Facilities and Recreation Programing

Yearly Maintenance

1. Mowing
2. Trash Removal

Proposed Improvements

1. Reconstruction of section between the Red Cedar Trail and Menomonie Library
2. Signage for the Loggers Loop, additional benches and maintenance
3. Complete acquisition of rail bed to the north and apply for grants to extend trail to Cedar Falls Road
4. Other trail maintenance including crack filling, patching and runoff erosion
5. Route trail under the bridge or highway to avoid the busy intersection at North Broadway/S.T.H. 25
6. Along the course of this trail is the option to travel east on Maple Avenue to Wakanda Park
7. Improve the intersection at STH 25
8. Signage, landscaping, and delineated crosswalks are planned. The trail could also use the Meadow Hill Railroad Bridge as a trail route instead of street access.



Lakebank Nature Trail



The Lakebank Nature Trail is 1,500' in length and borders the southern edge of Lake Menomin.

Park Inventory and Analysis

Amenities

1. Steep wooded banks and Lake Menomin.
2. Staircase and view of Lake Menomin.
3. Two historic nodes define the trailhead.

Needs

Programing and General Park and Facility Maintenance

Rentals Facilities and Recreation Programing

Yearly Maintenance

1. Area needs upkeep and trimming.

Proposed Improvements

1. Extend trail to the east with an access extending up to Crescent Street possibly by the overlook deck
2. Extend trail to the west and north to connect to La Pointe Park
3. Move location of the existing access to City property



Red Cedar Trail



The Red Cedar Trail is owned by WisDNR and is adjacent to the Red Cedar River and extends from Menomonie to the Chippewa River. The is approximately 14.5 miles long and connects to the Chippewa River Trail.

Park Inventory and Analysis

Amenities

1. Wooded areas
2. Access to Riverside Park
3. Use by pedestrians and non-motorized vehicles

Needs

Programing and General Park and Facility Maintenance

Rentals Facilities and Recreation Programing

Yearly Maintenance

Proposed Improvements



Menomonie Junior/Senior High School



Located on the southwest side of Menomonie, Menomonie Junior/Senior High School site is approximately 95 acres in area and is classified as a Sports Complex.

Park Inventory and Analysis

Amenities

1. Tennis courts
2. Football field
3. Track
4. Softball field
5. Soccer practice field
6. Open space
7. Field house

Needs

Programing and General Park and Facility Maintenance

Rentals Facilities and Recreation Programing

Yearly Maintenance

Proposed Improvements

1. School District prepares development plan



Menomonie Middle School



Located on the southeast side of Menomonie, Menomonie Middle School site is approximately 40.1 acres in area and is classified as a School Park.

Park Inventory and Analysis

Amenities

1. Football field
2. Track
3. Softball field
4. Soccer practice field
5. Open space
6. Disc golf
7. Basketball courts

Needs

Programing and General Park and Facility Maintenance

Rentals Facilities and Recreation Programing

Yearly Maintenance

Proposed Improvements



Oaklawn Elementary School



Located on the southeast side of Menomonee, Oaklawn Elementary School site is approximately 19 acres in area and is classified as a School Park.

Park Inventory and Analysis

Amenities

1. Playground equipment
2. Softball/baseball fields
3. Football/soccer field
4. Ice rink in the winter

Needs

Programing and General Park and Facility Maintenance

Rentals Facilities and Recreation Programing

Yearly Maintenance

Proposed Improvements



River Heights Elementary School



Located on the southwest side of Menomonie, River Heights Elementary School site is approximately 20 acres in area. The recreational facilities serves the entire south side (dense residential) of the City as there are no other public parks in the area and classified as a School Park.

Park Inventory and Analysis

Amenities

1. Playground
2. Basketball court
3. Soccer fields

Needs

1. Replace benches and picnic tables
2. New basketball courts
3. Improved drainage for soccer fields

Programing and General Park and Facility Maintenance

Rentals Facilities and Recreation Programing

1. Boys and Girls Club
2. Remedial summer school program
3. Summer school camp

Yearly Maintenance

1. School facilities are utilized more than a typical school due to programming and proximity to high density residential neighborhood. Maintenance is a high priority.

Proposed Improvements

1. Replace playground apparatus with all inclusive play-ground
2. Replace walking trails
3. Replace benches and picnic tables
4. Add basketball hoops and re-blacktop existing basketball courts
5. Improve drainage for the soccer fields as they flood frequently



Wakanda Elementary School



Located on the north side of Menomonie, Wakanda Elementary School site is approximately 14.58 acres in area and is classified as a School Park.

Park Inventory and Analysis

Amenities

1. Playground equipment
2. Basketball courts

Needs

Programing and General Park and Facility Maintenance

Rentals Facilities and Recreation Programing

Yearly Maintenance

Proposed Improvements



Menomonie Alliance Christian School



Located just southeast of Lake Menomin, Menomonie Alliance Christian School site is approximately 10.9 acres in area and is classified as a School Park.

Park Inventory and Analysis

Amenities

1. Basketball courts
2. Playground equipment
3. Swings
4. Volleyball court

Needs

Programing and General Park and Facility Maintenance

Rentals Facilities and Recreation Programing

Yearly Maintenance

Proposed Improvements



St. Paul's School



Located east of UW-STOUT, St. Paul's School site is approximately 0.1 in area and is classified as a School Park. The space is very limited with playground equipment and not adequate for normal school open space.

Park Inventory and Analysis

Amenities

1. Basketball court
2. Playground equipment

Needs

Programing and General Park and Facility Maintenance

Rentals Facilities and Recreation Programing

Yearly Maintenance

Proposed Improvements



St. Joseph's School



Located just east of downtown Menomonee, St. Joseph's School site is approximately 0.4 in area and is classified as a School Park. The space is very limited with playground equipment and not adequate for normal school open space.

Park Inventory and Analysis

Amenities

1. Basketball hoops
2. Large hard court surface
3. Playground equipment

Needs

Programing and General Park and Facility Maintenance

Rentals Facilities and Recreation Programing

Yearly Maintenance

Proposed Improvements



UW-Stout Sports Complex



Located on the UW-Stout campus, UW-Stout Sports Complex is approximately 26 acres in area and is classified as a Sports Complex. The facilities are predominantly a UW-Stout resource, and not generally programmed for community participation.

Park Inventory and Analysis

Amenities

1. Lighted tennis courts
2. Football stadium
3. Baseball fields
4. Softball fields
5. Ropes course
6. Track
7. Soccer field
8. Lacrosse fields
9. Football field
10. Indoor gymnasium facility

Needs

Programing and General Park and Facility Maintenance

Rentals Facilities and Recreation Programing

Yearly Maintenance

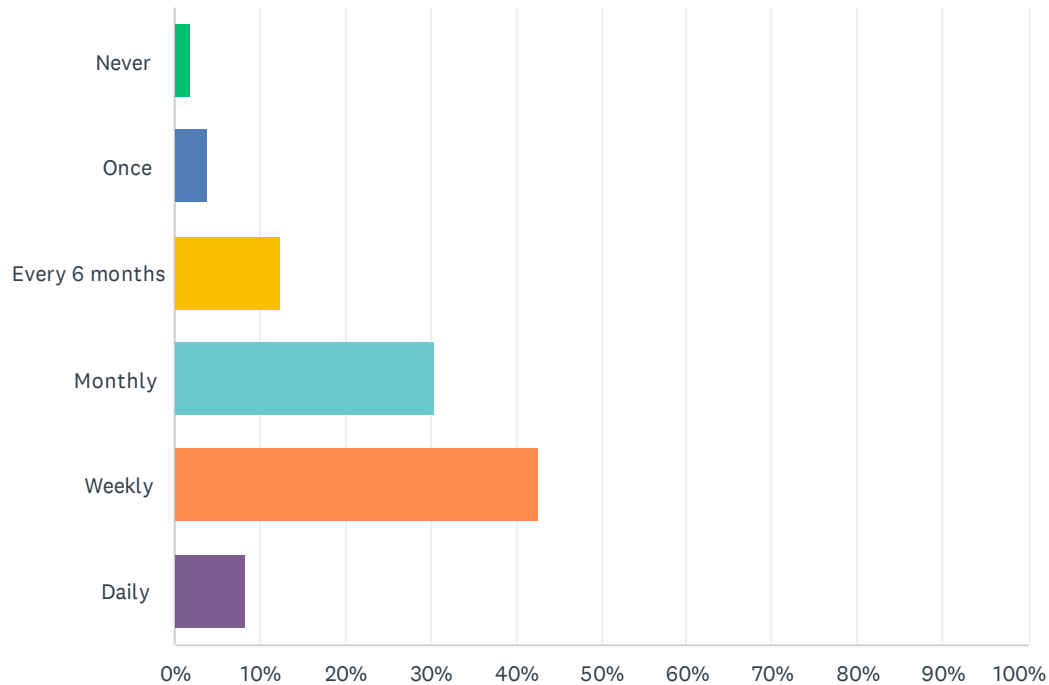
Proposed Improvements

1. The complex should expand as required by University programs and needs
2. A joint summer program between the University and City would appear advantageous

Appendix B – Survey Results Summary

Q1 How often in a year do you or a member of your family use one of the public Parks and Recreation facilities and/or programs in the past 12 months? Examples – Wakanda Park, Wolske Bay Park, dog park, fairgrounds, playgrounds, classes/programs/lessons, etc.

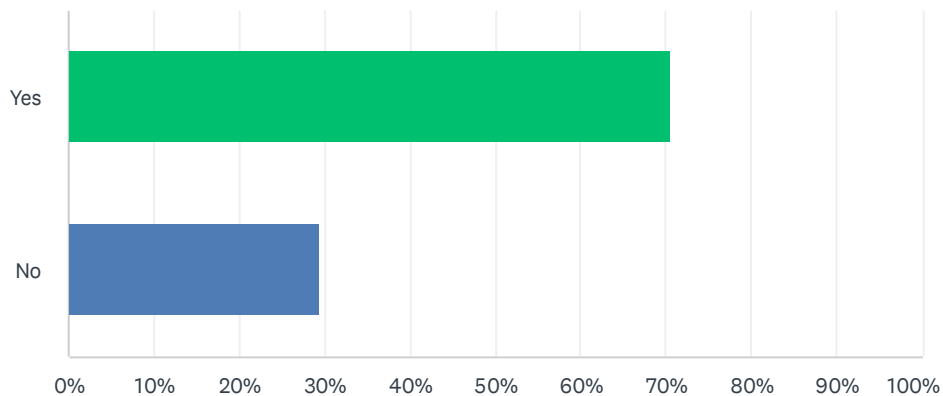
Answered: 938 Skipped: 0



ANSWER CHOICES	RESPONSES	
Never	2.03%	19
Once	3.84%	36
Every 6 months	12.47%	117
Monthly	30.60%	287
Weekly	42.64%	400
Daily	8.42%	79
TOTAL		938

Q2 Do you currently use the city bike and pedestrian trails to bike, walk, or run?

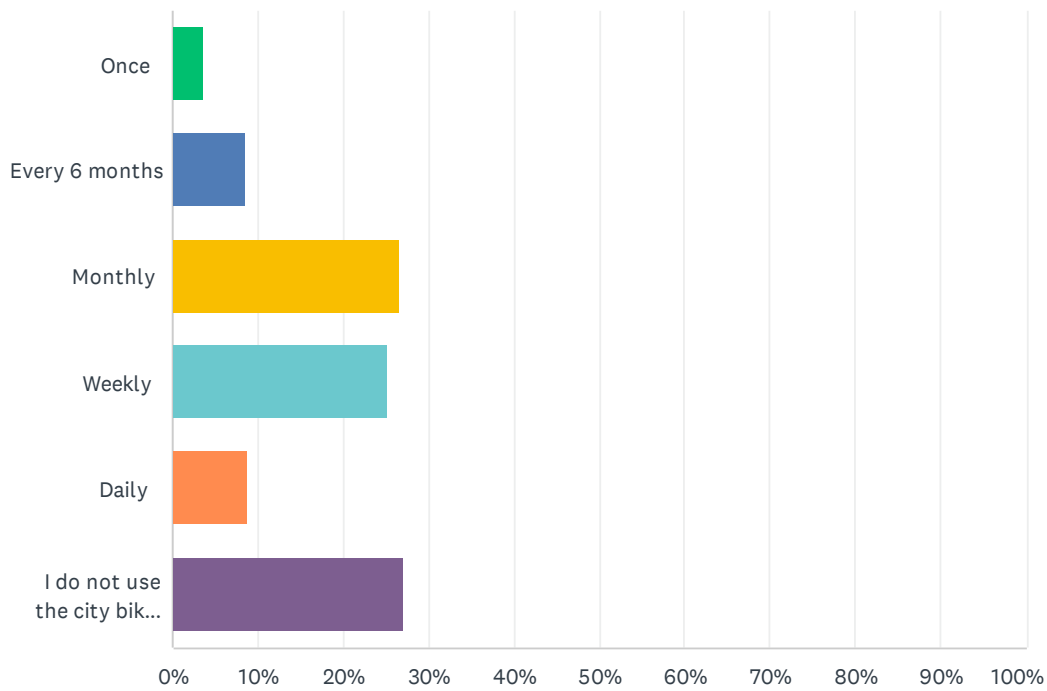
Answered: 938 Skipped: 0



ANSWER CHOICES	RESPONSES	
Yes	70.58%	662
No	29.42%	276
TOTAL		938

Q3 If you answered yes to question 2, how often have you used the bike and pedestrian trails in the past 12 months?

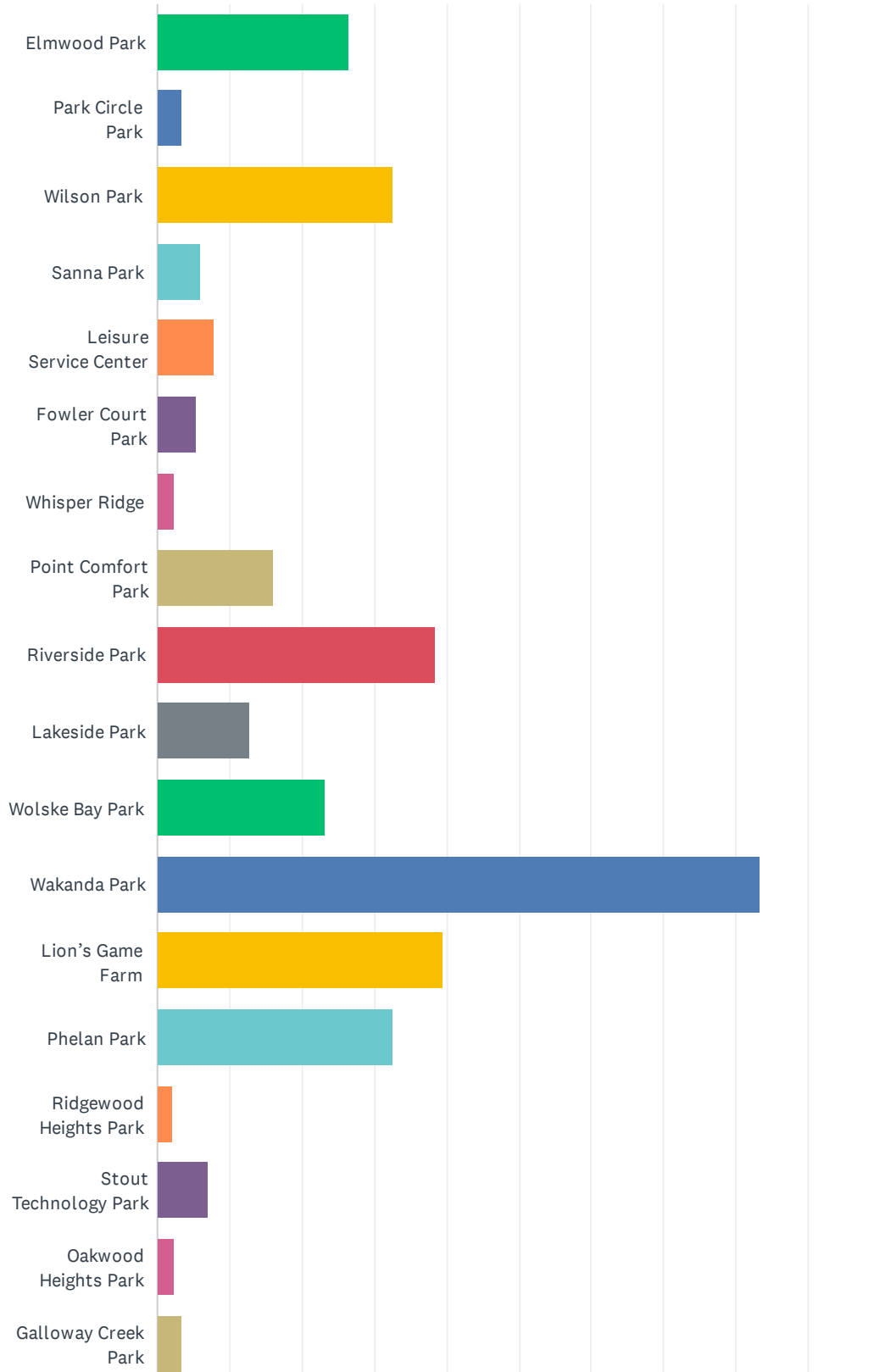
Answered: 929 Skipped: 9



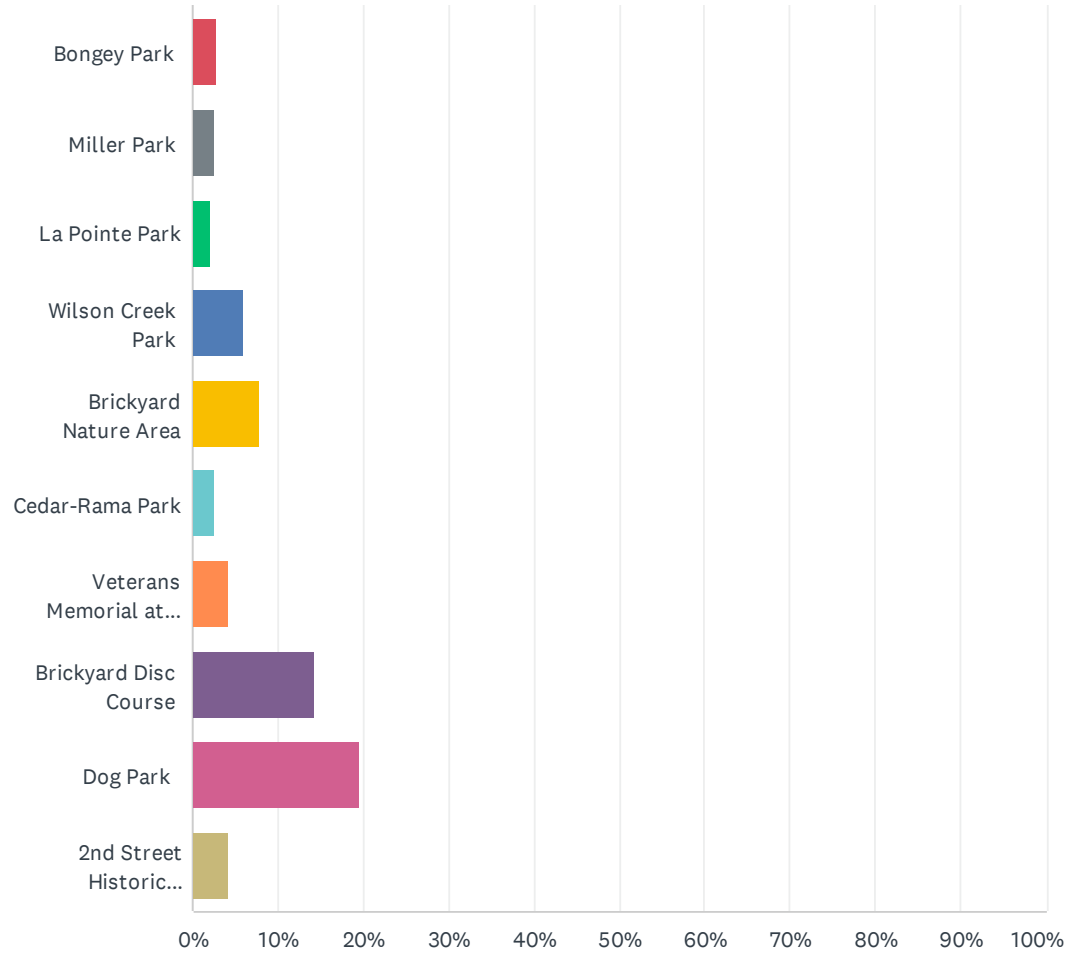
ANSWER CHOICES	RESPONSES	
Once	3.55%	33
Every 6 months	8.61%	80
Monthly	26.70%	248
Weekly	25.19%	234
Daily	8.83%	82
I do not use the city bike and pedestrian trails to bike, walk, or run.	27.13%	252
TOTAL		929

Q4 Which of the following City of Menomoneie parks do you and your family visit the most? (Please check all that apply.)

Answered: 904 Skipped: 34



City of Menomonie Comprehensive Outdoor Recreation Plan

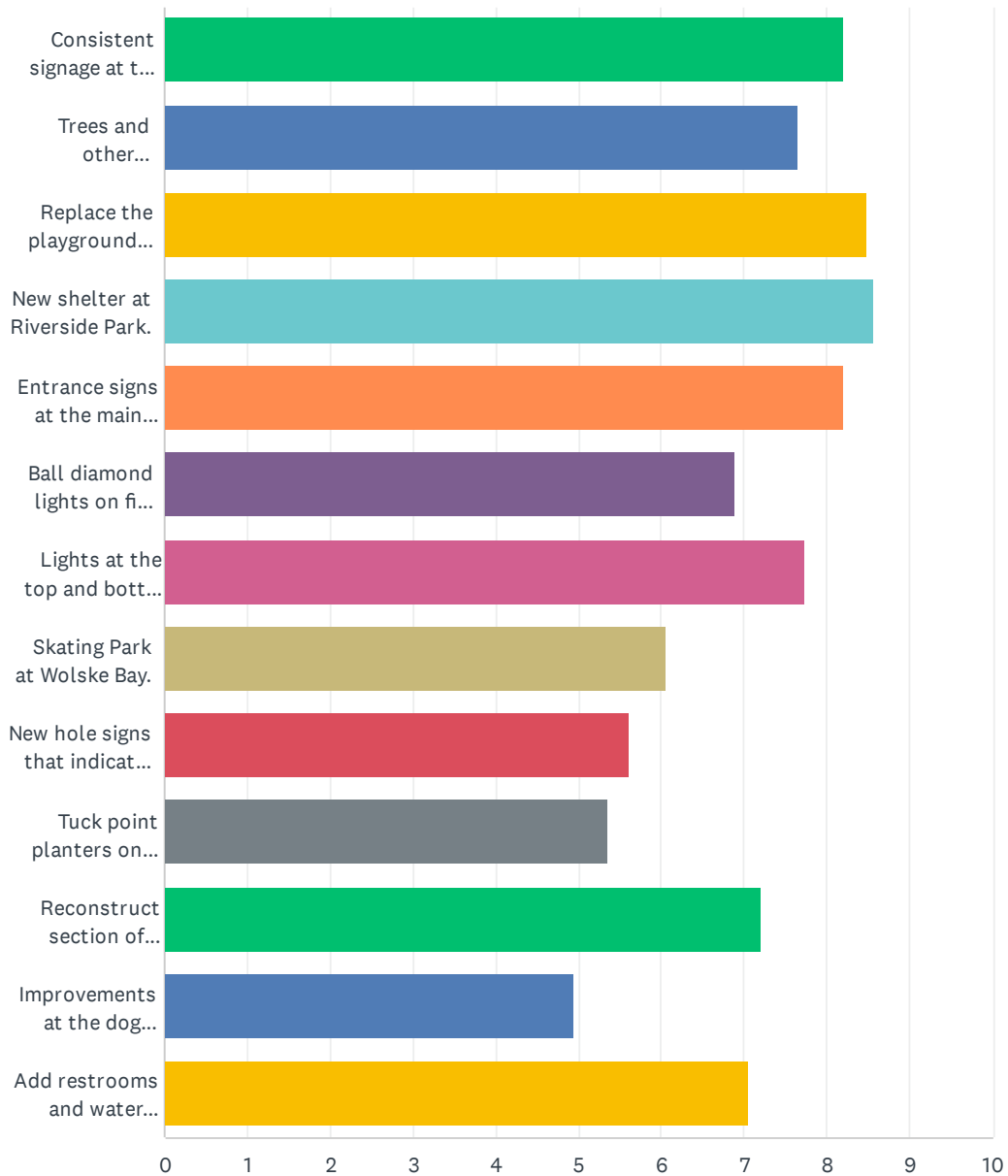


City of Menomonie Comprehensive Outdoor Recreation Plan

ANSWER CHOICES	RESPONSES	
Elmwood Park	26.44%	239
Park Circle Park	3.32%	30
Wilson Park	32.52%	294
Sanna Park	5.97%	54
Leisure Service Center	7.96%	72
Fowler Court Park	5.31%	48
Whisper Ridge	2.43%	22
Point Comfort Park	15.93%	144
Riverside Park	38.38%	347
Lakeside Park	12.83%	116
Wolske Bay Park	23.34%	211
Wakanda Park	83.30%	753
Lion's Game Farm	39.49%	357
Phelan Park	32.52%	294
Ridgewood Heights Park	2.10%	19
Stout Technology Park	7.08%	64
Oakwood Heights Park	2.32%	21
Galloway Creek Park	3.32%	30
Bongey Park	2.77%	25
Miller Park	2.65%	24
La Pointe Park	2.10%	19
Wilson Creek Park	5.97%	54
Brickyard Nature Area	7.85%	71
Cedar-Rama Park	2.54%	23
Veterans Memorial at Knapp Park	4.31%	39
Brickyard Disc Course	14.27%	129
Dog Park	19.69%	178
2nd Street Historic Corridor	4.20%	38
Total Respondents: 904		

Q5 Please rank the following improvements in order of priority that you feel they should be addressed. (Rank in order of preference 1-12, 1 being top choice)

Answered: 673 Skipped: 265



City of Menomonie Comprehensive Outdoor Recreation Plan

	1	2	3	4	5	6	7	8	9	10	11
Consistent signage at the parks.	18.11% 117	10.22% 66	8.67% 56	9.29% 60	6.81% 44	6.19% 40	6.04% 39	5.73% 37	6.19% 40	5.73% 37	5.42% 35
Trees and other vegetation should be planted to define areas of the park at Fowler Court.	6.77% 43	12.91% 82	10.71% 68	8.03% 51	7.72% 49	8.35% 53	6.93% 44	6.77% 43	6.61% 42	7.24% 46	7.24% 46
Replace the playground equipment at the Leisure Services Center.	9.26% 60	12.35% 80	15.28% 99	12.04% 78	7.25% 47	8.02% 52	8.33% 54	5.56% 36	4.78% 31	5.40% 35	4.63% 30
New shelter at Riverside Park.	6.96% 45	8.96% 58	12.21% 79	17.31% 112	11.44% 74	11.59% 75	9.12% 59	6.65% 43	4.79% 31	3.40% 22	2.47% 16
Entrance signs at the main entrances and directional signs within the park. Upgrade signs at amenities such as the ball diamonds at Wakanda Park	5.58% 36	9.15% 59	8.84% 57	11.01% 71	20.16% 130	11.01% 71	7.75% 50	6.67% 43	5.58% 36	4.65% 30	3.57% 23
Ball diamond lights on field behind maintenance shop at Wakanda Park.	4.96% 32	4.50% 29	4.50% 29	6.36% 41	8.84% 57	17.98% 116	11.63% 75	8.22% 53	8.22% 53	6.05% 39	6.67% 43
Lights at the top and bottom of the stairs leading from the upper portion of the park down to the beach area and lights along the road adjacent to the beach area at Wakanda Park.	4.60% 30	6.75% 44	8.74% 57	7.06% 46	10.74% 70	11.35% 74	19.33% 126	11.50% 75	7.06% 46	6.13% 40	3.68% 24
Skating Park at Wolske	3.69% 24	5.84% 38	4.76% 31	4.92% 32	4.15% 27	4.76% 31	9.22% 60	18.89% 123	9.37% 61	9.83% 64	6.30% 41

City of Menomonie Comprehensive Outdoor Recreation Plan

Bay.											
New hole signs that indicate par and length of hole on disc course at Wakanda Park.	5.99% 39	2.76% 18	3.99% 26	3.07% 20	4.30% 28	3.53% 23	4.30% 28	9.06% 59	23.20% 151	11.21% 73	12.14% 79
Tuck point planters on both sides of the band shelter. Relocate sculpture. Landscaping improvements at Wilson Park.	3.70% 24	2.77% 18	3.85% 25	5.39% 35	3.70% 24	4.47% 29	4.31% 28	6.93% 45	10.02% 65	24.04% 156	14.64% 95
Reconstruct section of Stokke Trail between the Red Cedar Trail and Menomonie Library and other trail maintenance including crack filling, patching and runoff erosion.	14.37% 95	8.62% 57	6.96% 46	7.26% 48	6.05% 40	5.75% 38	3.33% 22	5.30% 35	3.63% 24	6.35% 42	20.12% 133
Improvements at the dog park.	7.46% 49	4.87% 32	4.26% 28	3.20% 21	5.63% 37	3.50% 23	3.20% 21	3.50% 23	3.65% 24	5.02% 33	8.68% 57
Add restrooms and water spigot in the open space near the beach at Wakanda Park.	11.48% 76	12.54% 83	9.52% 63	6.95% 46	4.68% 31	4.83% 32	6.19% 41	4.83% 32	4.23% 28	3.47% 23	3.02% 20

Q6 Which of the following amenities or activities that are the most important for the City to provide at local parks for you and members of your household? (Rank in order of preference 1-10, 1 being top choice)

Answered: 655 Skipped: 283



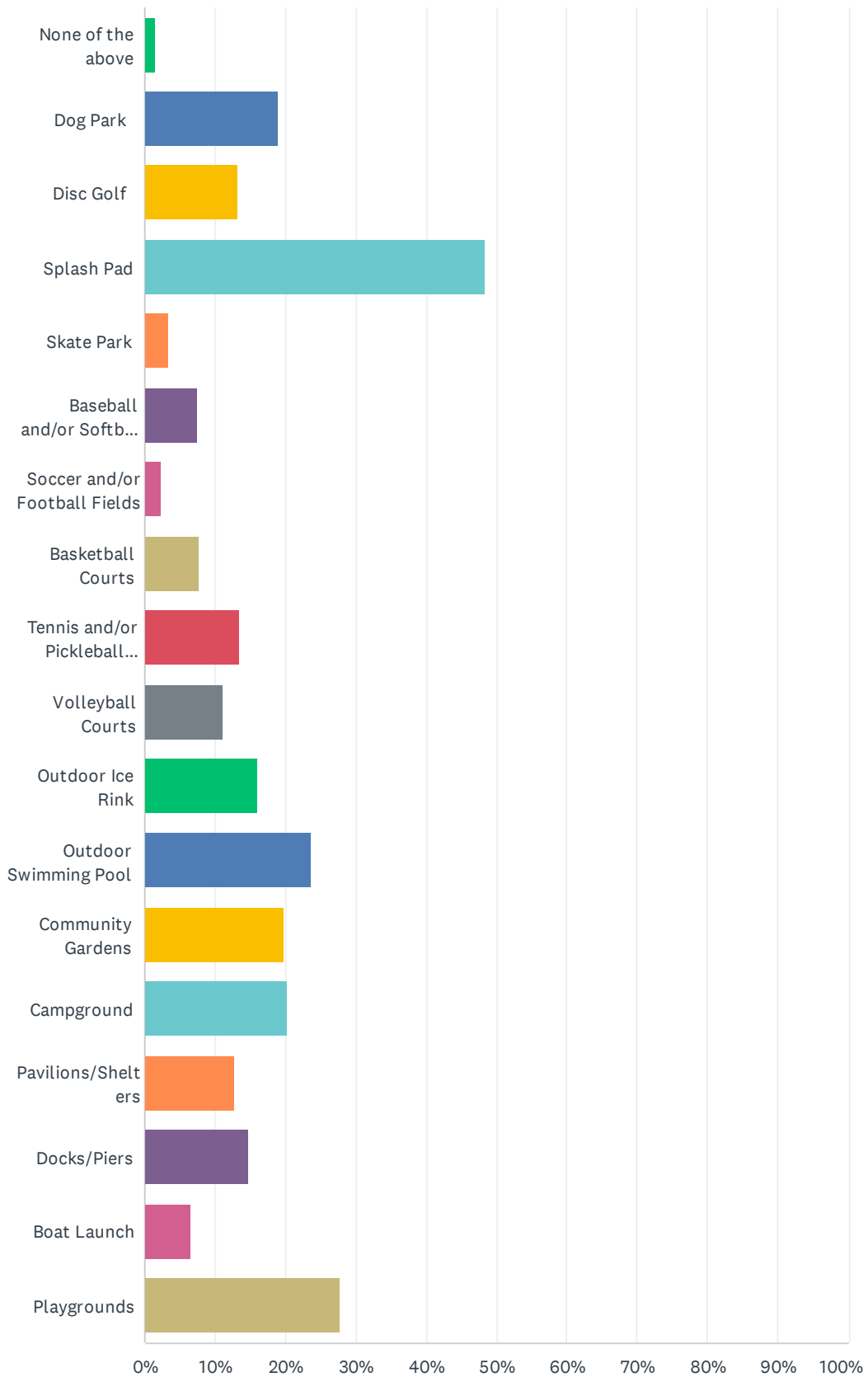
City of Menomonie Comprehensive Outdoor Recreation Plan

	1	2	3	4	5	6	7	8	9	10	TOTAL	S
Basketball Courts	13.67% 82	20.50% 123	18.50% 111	9.67% 58	10.67% 64	7.50% 45	6.83% 41	4.50% 27	5.33% 32	2.83% 17	600	
Baseball Diamonds	6.89% 41	15.46% 92	18.66% 111	16.30% 97	12.10% 72	10.08% 60	5.88% 35	7.39% 44	3.87% 23	3.36% 20	595	
Softball Diamonds	4.20% 25	10.42% 62	18.99% 113	18.15% 108	11.76% 70	12.94% 77	10.25% 61	6.22% 37	5.04% 30	2.02% 12	595	
Soccer Fields	2.71% 16	6.61% 39	7.12% 42	18.81% 111	17.63% 104	14.24% 84	13.22% 78	10.34% 61	5.76% 34	3.56% 21	590	
Golf Courses	9.02% 54	7.18% 43	7.01% 42	5.68% 34	12.69% 76	10.35% 62	11.85% 71	10.85% 65	9.18% 55	16.19% 97	599	
Hockey Rinks	4.56% 27	5.57% 33	5.07% 30	8.45% 50	7.60% 45	15.54% 92	13.18% 78	14.70% 87	14.70% 87	10.64% 63	592	
Tennis Courts	3.87% 23	7.39% 44	7.06% 42	6.22% 37	10.08% 60	11.43% 68	21.51% 128	16.30% 97	12.61% 75	3.53% 21	595	
Skateboard Parks	1.36% 8	7.63% 45	4.58% 27	5.76% 34	4.92% 29	5.25% 31	7.12% 42	16.27% 96	19.66% 116	27.46% 162	590	
Playground Equipment	48.73% 306	13.38% 84	8.12% 51	6.21% 39	4.62% 29	3.03% 19	2.23% 14	3.34% 21	8.60% 54	1.75% 11	628	
Pickleball	10.76% 65	9.77% 59	6.95% 42	5.46% 33	6.95% 42	7.62% 46	5.63% 34	7.45% 45	12.25% 74	27.15% 164	604	

Q7 Which of the following types of recreational facilities would you like to see more of in the City? (Please select your top three.)

Answered: 673 Skipped: 265

City of Menomonie Comprehensive Outdoor Recreation Plan

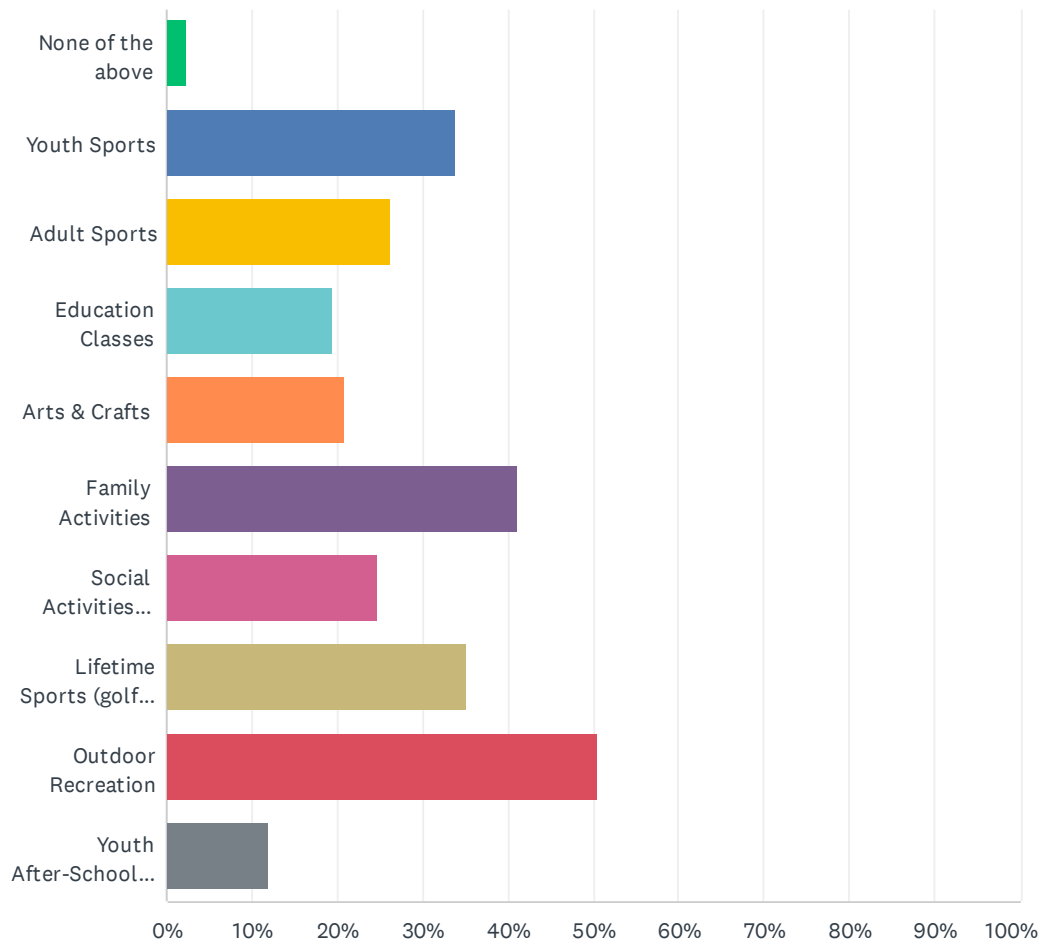


City of Menomonie Comprehensive Outdoor Recreation Plan

ANSWER CHOICES	RESPONSES	
None of the above	1.49%	10
Dog Park	18.87%	127
Disc Golf	13.22%	89
Splash Pad	48.44%	326
Skate Park	3.42%	23
Baseball and/or Softball Fields	7.43%	50
Soccer and/or Football Fields	2.38%	16
Basketball Courts	7.73%	52
Tennis and/or Pickleball Courts	13.37%	90
Volleyball Courts	11.14%	75
Outdoor Ice Rink	16.05%	108
Outdoor Swimming Pool	23.63%	159
Community Gardens	19.76%	133
Campground	20.36%	137
Pavilions/Shelters	12.78%	86
Docks/Piers	14.71%	99
Boat Launch	6.54%	44
Playgrounds	27.64%	186
Total Respondents: 673		

Q8 What types of recreation programs would you and members of your household be most interested to participate in? (Please select your top three.)

Answered: 681 Skipped: 257

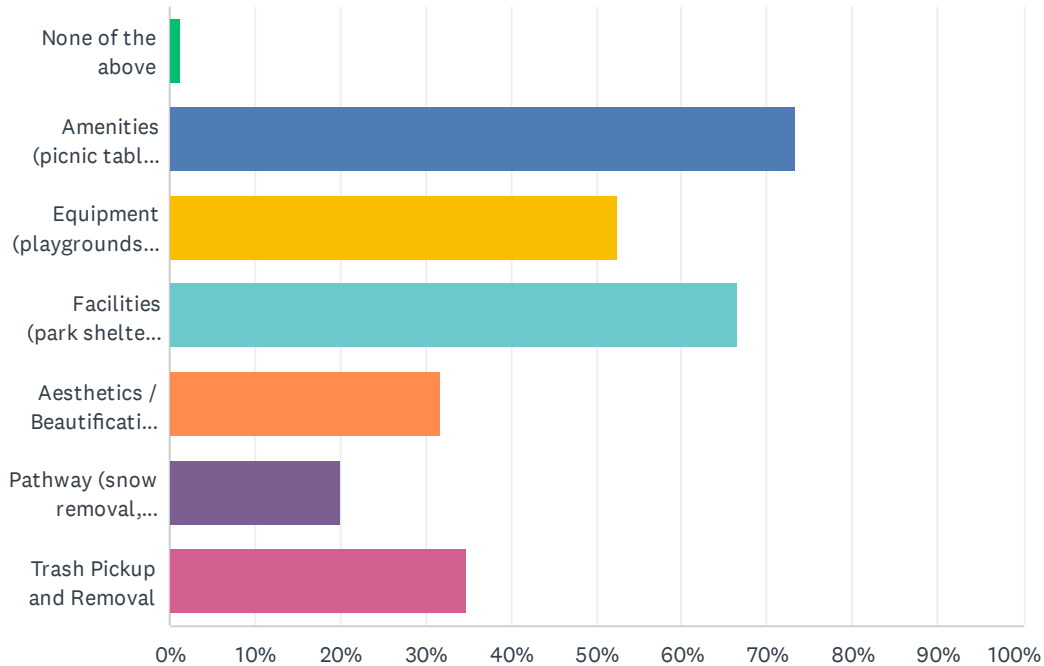


City of Menomonie Comprehensive Outdoor Recreation Plan

ANSWER CHOICES	RESPONSES	
None of the above	2.35%	16
Youth Sports	33.92%	231
Adult Sports	26.28%	179
Education Classes	19.38%	132
Arts & Crafts	21.00%	143
Family Activities	41.12%	280
Social Activities (dance, theater, music, etc.)	24.82%	169
Lifetime Sports (golf, tennis, biking, etc.)	35.10%	239
Outdoor Recreation	50.51%	344
Youth After-School Programs	11.89%	81
Total Respondents: 681		

Q9 What are your priorities for park maintenance? (Please select your top three.)

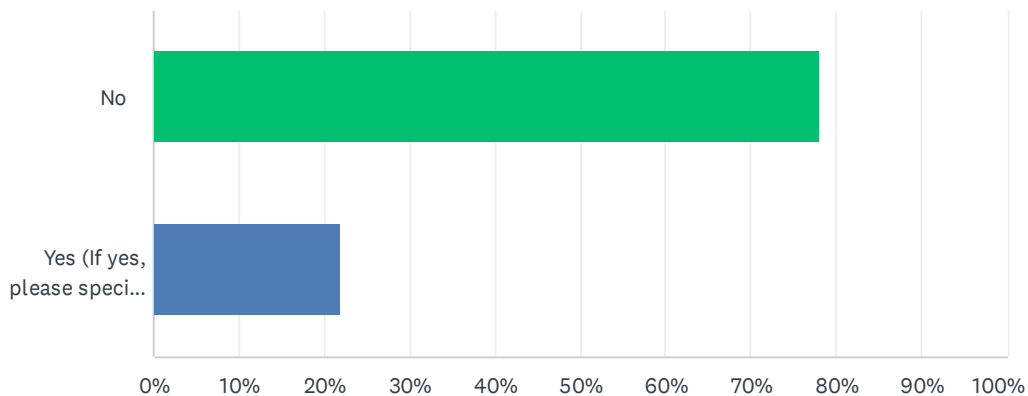
Answered: 676 Skipped: 262



ANSWER CHOICES	RESPONSES	
None of the above	1.18%	8
Amenities (picnic tables, trash cans, water fountain, etc.)	73.37%	496
Equipment (playgrounds, basketball hoops, etc.)	52.37%	354
Facilities (park shelters, parking, restroom, etc.)	66.57%	450
Aesthetics / Beautification (landscaping, mowing, flowers, etc.)	31.80%	215
Pathway (snow removal, surface repair, etc.)	20.12%	136
Trash Pickup and Removal	34.76%	235
Total Respondents: 676		

Q10 Do you have any concerns about safety or accessibility in any of our parks?

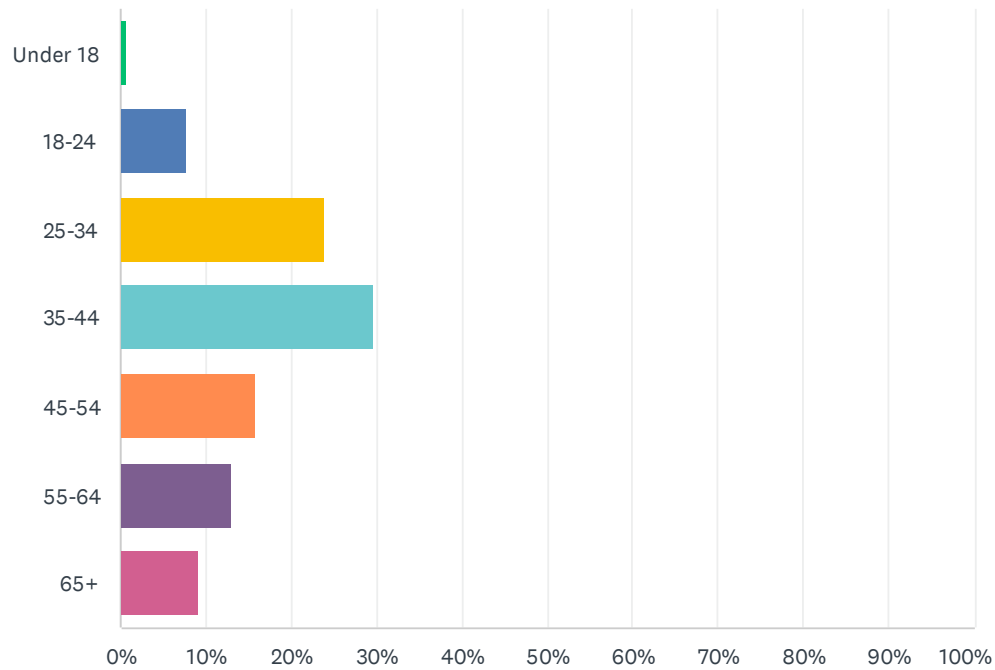
Answered: 672 Skipped: 266



ANSWER CHOICES	RESPONSES	
No	77.98%	524
Yes (If yes, please specify concerns below)	22.02%	148
TOTAL		672

Q11 What is your age group?

Answered: 680 Skipped: 258



ANSWER CHOICES	RESPONSES	
Under 18	0.74%	5
18-24	7.65%	52
25-34	23.82%	162
35-44	29.71%	202
45-54	15.74%	107
55-64	13.09%	89
65+	9.26%	63
TOTAL		680

Appendix C – Resolution

RESOLUTION NO. 2023-10

OFFERED BY: Kelly McCullough

Adopting the City of Menomonie Comprehensive Outdoor Recreation Plan 2023-2028 Update

WHEREAS, the City of Menomonie, in cooperation with Cedar Corporation, has developed the City of Menomonie Comprehensive Outdoor Recreation Plan 2023-2028 Update; and

WHEREAS, this Plan provides an inventory of existing facilities and outlines the foreseeable outdoor recreation facility needs of the City of Menomonie that can be adequately maintained;

WHEREAS, the Wisconsin Department of Natural Resources and many state and federal grant programs require an updated CORP to maintain grant-in-aid eligibility; and

WHEREAS, the City of Menomonie Recreation Advisory Board regularly reviewed the drafts of the plan and provided opportunities for public input; and

WHEREAS, the City of Menomonie Recreation Advisory Board recommended approval of the Comprehensive Outdoor Recreation Plan 2023-2028 Update as presented on February 13, 2023; and

WHEREAS, the City of Menomonie Plan Commission recommended approval of the Comprehensive Outdoor Recreation Plan 2023-2028 Update as presented on March 27, 2023.

NOW, THEREFORE, BE IT RESOLVED, that the Common Council hereby formally adopts the City of Menomonie Comprehensive Outdoor Recreation Plan 2023-2028 Update as the official policy statement for the development of outdoor recreation programs and facilities in the City of Menomonie.

Adopted by the Common Council of the City of Menomonie on this 17 day of April, 2023.

COMMON COUNCIL
CITY OF MENOMONIE

By: Randy Knaack
Randy Knaack, Mayor

Attest: Kate Martin
Kate Martin, Clerk